



# FABRICATION & WELDING RANGE

*Protecting you for life's best moments.*

**rpb**

# Protecting you for life's best moments.

Those moments we experience every day. Be it a challenging mountain hike, a breathtaking sunset or just returning safely home from work to enjoy the things in life that matter most.



Protecting you for life's best moments.

rpb

## RPB Fabrication & Welding Range

As the respiratory protection brand, we seek to revolutionize how you experience your workday by creating respiratory equipment that makes you safer and more productive, enabling you to push the boundaries of your profession.

In our mission to protect you for life's best moments, we've grown to become the commanding power in respiratory protection across heavy industries with over 40 years' experience helping you to breathe better.

The RPB Fabrication and Welding Range is the world's most advanced protection for industry professionals. Consisting of supplied and powered air respirators, air monitoring, filtration and safety essentials, RPB takes care of your safety, so you can focus on the job at hand.

As we embark on a new frontier in respiratory protection, join the movement to build a better, safer, healthier future for the next generation of industrial workers.



**Z3™**  
Page 24

**Z4°**  
Page 18

**Z-LINK+°**  
Page 12

**Z-LINK°**  
Page 8

**Z-LINK°  
RADIANT HEAT**  
Page 14



**POWERED AIR**  
Page 30



**SUPPLIED AIR**  
Page 34

Protecting you for life's best moments.



## Product Comparison



**Z-LINK®**

**Z-LINK+®**

**Z-LINK® RADIANT HEAT**

**Z4®**

**Z3™**

Air supply	SAR or PAPR	SAR or PAPR	SAR or PAPR	SAR or PAPR	SAR or PAPR
Respirator type	Grinding	Welding/grinding	High heat	Welding/grinding	Welding
Available attachments and accessories	Comfort-Link™ Quiet-Link™ Comms-Link™ Vision-Link™ Tear-off lenses	Comfort-Link™ Quiet-Link™ Comms-Link™ Vision-Link™ Tear-off lenses	Comfort-Link™ Quiet-Link™ Comms-Link™ Vision-Link™ Tear-off lenses	Comfort-Link™ Comms-Link™ Vision-Link™ Bump cap	Hard hat
Head protection	<b>Integrated hard hat</b>	<b>Integrated hard hat</b>	<b>Integrated hard hat</b>	<b>Optional bump cap</b>	<b>Optional hard hat</b>
Hearing protection	<b>Clip-in earmuffs</b>	<b>Clip-in earmuffs</b>	<b>Clip-in earmuffs</b>	<b>Compatible with earmuffs</b>	<b>Compatible with ear plugs</b>
Eye protection	<b>Yes</b>	<b>Yes</b>	<b>Yes</b>	<b>Yes</b>	<b>Yes</b>
Cape/hood types	Zytec® FR	Zytec® FR	Aluminized FR	Fire Retardant	n/a
Assigned protection factor	1000	1000	1000	1000	25
Ideal for	Grinding, arc spraying, oxy cutting.	Heavy industry, ship building, rail industry.	Foundry, steel mills.	All production welding.	All production welding, no grinding necessary.
Top-rated feature	Can be used for multiple applications.	Removable weld visor, hard hat.	High heat resistant.	Lightweight, even weight distribution.	ADF clarity.



# RPB® Z-LINK® RESPIRATOR

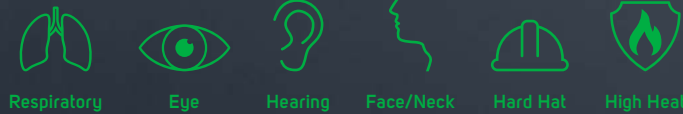
## Complete versatility.

The RPB Z-Link offers numerous configurations so you can wear it your way. From grinding and welding (with the Z-Link+), to smelting in high heat environments (with the Z-Link Radiant Heat) the Z-Link serves as the most versatile respirator on the planet. Designed with your comfort in mind, the Z-Link ensures you'll always be protected for life's best moments.

The Z-Link's large visor acts as the framework for multiple accessories to easily transform your protection to suit your environment. With the visor's widened perspective this provides operators with an exceptional downward and peripheral field of view and with the hinge visor opening, this gives operators the ability to easily communicate outside the work environment. With 5 lens options (including a shade 5 lens), the Z-Link also lends itself to arc spraying.

To further increase your comfort and stability, the Z-Link can also be fitted with the Comfort-Link™ padding system. Experience complete protection and versatility with the RPB Z-Link.

The Z-Link offers the user superior protection in all key areas:



Respiratory Eye Hearing Face/Neck Hard Hat High Heat

Protecting you for life's best moments.

**RPB**®  
ADVANCING  
YOUR SAFETY

**rpb**

## Features & Benefits Z-Link®

Optimum vision and high velocity impact protection with large optically-clear safety lens (replaceable spare part). Choice of 5 anti-fog and scratch resistant ANSI Z87+ (EN166) lenses: Premium Clear, Green Tint (Shade 5), Yellow Tint, Black Tint, and Mirror Tint. **Tear-off lens system ensures you have a clear field of view at all times.**

Air flow and distribution is fully adjustable with the air deflector system to suit personal preference. **Air supply circulates throughout headtop, moving over your skin to cool you down, enhancing your experience of comfort.**

Fixed jaw ensures secure cape attachment.

**All parts can be purchased individually for easy maintenance and servicing.**

Vision-Link™ light mount point.

Visor shown open for marketing purposes only. Do not open your visor in the work environment. US Patent No. US D802,117 S.



■ ANSI Z89.1 certified head protection (EN397).

■ Visor hinges open for easy communication with team (outside of respiratory hazards).

■ Padded interior with adjustable ratchet system ensures a perfect customized fit that supports movement, increasing comfort and productivity. **The optional Comfort-Link™ padding system provides further comfort and stability.**



Shown without cape for visual purposes only >>

■ Compatible with RPB Comms-Link™ in-helmet communication system.

■ 3 cape materials available: Tychem® 2000, Tychem® 4000 or Zytex® FR. **FR breathing tube cover available to increase the life of the breathing tube.**

For more information visit [rpbsafety.com/z-link](http://rpbsafety.com/z-link)

## Certifications

**ISO9001**  
CERTIFIED COMPANY

**NIOSH**  
National Institute for Occupational Safety and Health  
PAPR & SAR Type C

**ANSI**  
S3.19  
HEARING PROTECTION  
Only in conjunction with 18-533 earmuffs.

Z89.1  
HARD HAT PROTECTION  
Type 1 Class C

Z87+  
EYE & FACE PROTECTION

BSI Certified Product

AS/NZS 1716:2012  
BMP# 714303  
RESPIRATORY PROTECTION

AS/NZS 1801:1997  
BMP# 714306  
HARD HAT PROTECTION  
Not all configurations conform to this standard. Please visit [rpbsafety.com](http://rpbsafety.com) for more details.

AS/NZS 1337.1:2010  
BMP# 714304  
EYE & FACE PROTECTION

**CE 2797**

EN14594:2005 3B  
EN12941:1998  
+A2:2008 TH3 P R SL  
RESPIRATORY PROTECTION

EN352-3:2002  
HEARING PROTECTION  
Only in conjunction with 18-533 earmuffs.

EN397:2003+A1:2009  
HARD HAT PROTECTION  
IMPACT CLAUSES

EN166:2001 CLASS 1F  
EYE & FACE PROTECTION

**SEI**

Certified Model  
Modèle certifié

CSA Z94.3-15  
EYE & FACE PROTECTION  
Class 7D Respirator Facepiece  
PROTECTION DES YEUX ET DU VISAGE  
Masque respiratoire classe 7D

**MADE IN THE USA**  
\*From local & globally sourced components

**rpb**

## Features & Benefits Z-Link+®

The Z-Link+ utilizes the Z-Link headtop as the framework for this product, offering all the same features and benefits of the Z-Link while extending the product's capabilities to protect you while welding.

The Z-Link+ visor weighs just 13.8 ounces (390g) including ADF lens.

This can be easily removed for extended periods where just grinding is required.



Large welding auto darkening filter with a 1.1.1 rating. Variable auto darkening lens (shades 3, 5, or 9-13). Replaceable impact and ADF lenses for ease of maintenance. **Optional magnifying lens available.**



Z-Link+ visor attaches directly onto to the main grinding visor, enabling you to seamlessly switch from welding to grinding while maintaining respiratory protection.

For more information visit [rpbafety.com/z-link-plus](http://rpbafety.com/z-link-plus)

## Certifications

All Z-Link® certifications apply. The Z-Link+ offers additional certifications, indicated in green below:

**ISO9001**  
CERTIFIED COMPANY

**NIOSH**  
National Institute for Occupational Safety and Health  
PAPR & SAR Type C

**ANSI**  
S3.19  
HEARING PROTECTION  
Only in conjunction with 18-533 earmuffs.

Z89.1  
HARD HAT PROTECTION  
Type 1 Class C

Z87+  
EYE & FACE PROTECTION

Z87W  
WELDING EYE PROTECTION

**BSI Certified Product**  
AS/NZS 1716:2012  
BMP# 714303  
RESPIRATORY PROTECTION

AS/NZS 1801:1997  
BMP# 714306  
HARD HAT PROTECTION  
Not all configurations conform to this standard.  
Please visit [rpbafety.com](http://rpbafety.com) for more details.

AS/NZS 1337.1:2010  
BMP# 714304  
EYE & FACE PROTECTION

AS/NZS 1338.1:2012  
BMP# 714305  
WELDING EYE PROTECTION

**CE 2797**

EN14594:2005 3B  
EN12941:1998  
+A2:2008 TH3 P R SL  
RESPIRATORY PROTECTION

EN352-3:2002  
HEARING PROTECTION  
Only in conjunction with 18-533 earmuffs.

EN397:2003+A1:2009  
HARD HAT PROTECTION  
IMPACT CLAUSES

EN166:2001 CLASS 1F  
EYE & FACE PROTECTION

EN379:2003  
WELDING EYE PROTECTION

**SEI**

Certified Model  
Modèle certifié

CSA Z94.3-15  
EYE & FACE PROTECTION  
Class 7D Respirator Facepiece  
PROTECTION DES YEUX ET DU VISAGE  
Masque respiratoire classe 7D



**rpb**

## Features & Benefits Z-Link® Radiant Heat

Utilizing the Z-Link framework, the RPB Radiant Heat kit attaches to the Z-Link headtop, enabling you to work in high heat environments while experiencing unrivaled comfort and protection.

Gold coated visor reflects radiant heat, minimizing heat transfer while ensuring eye protection.

Visor options include gold coated (pictured), IR5 gold coated, and IR5.



Large visor lift tab enables you to easily raise and lower visor while wearing gloves.

Air flow is dispersed throughout your breathe zone, as well as over your head, neck, and upper body to aid in cooling.



Integrated hard hat protection.



Flame resistant hood protects skin from splashes, sparks and radiant heat.

Clip-on visor requires no tools for easy detachment and replacement.

Secured cape ensures hood moves with you for greater range of movement.

Aluminized breathing tube cover available to increase the life of the breathing tube.

For more information visit [rpbsafety.com/z-link-radiant-heat](http://rpbsafety.com/z-link-radiant-heat)

## Certifications

All Z-Link® certifications apply.

**ISO9001**  
CERTIFIED COMPANY

**NIOSH**  
National Institute for Occupational Safety and Health  
PAPR & SAR Type C

**ANSI**  
S3.19  
HEARING PROTECTION  
Only in conjunction with 18-533 earmuffs.

Z89.1  
HARD HAT PROTECTION  
Type 1 Class C

Z87+  
EYE & FACE PROTECTION

**BSI Certified Product**  
AS/NZS 1716:2012  
BMP# 714303  
RESPIRATORY PROTECTION

AS/NZS 1801:1997  
BMP# 714306  
HARD HAT PROTECTION  
Not all configurations conform to this standard.  
Please visit [rpbsafety.com](http://rpbsafety.com) for more details.

AS/NZS 1337.1:2010  
BMP# 714304  
EYE & FACE PROTECTION

**CE 2797**

EN14594:2005 3B  
EN12941:1998  
+A2:2008 TH3 P R SL  
RESPIRATORY PROTECTION

EN352-3:2002  
HEARING PROTECTION  
Only in conjunction with 18-533 earmuffs.

EN397:2003+A1:2009  
HARD HAT PROTECTION  
IMPACT CLAUSES

EN166:2001 CLASS 1F  
EYE & FACE PROTECTION



Certified Model  
Modèle certifié

**CSA Z94.3-15**  
EYE & FACE PROTECTION  
Class 7D Respirator Facepiece  
PROTECTION DES YEUX ET DU VISAGE  
Masque respiratoire classe 7D





# Build Your RPB® Z-Link® Respirator

Note: Not all configurations may be available in your region.

## 1 Choose Your Headtop



→ Z-Link®



→ Z-Link+®



→ Z-Link® Radiant Heat

Jump to **3 Choose Your Air Supply**

## 2 Choose Your Cape



→ Zytec® FR Face Seal



→ Zytec® FR Shoulder Cape



→ Zytec® FR Chin Seal

## 3 Choose Your Air Supply



→ PX5® (PAPR)



→ C40™ Climate Control Device (SAR)



→ Constant Flow Valve (SAR)

## 4 Choose Your Upgrades



→ Comms-Link™ In-helmet communication system



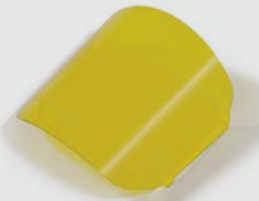
→ Comfort-Link™ Side padding system



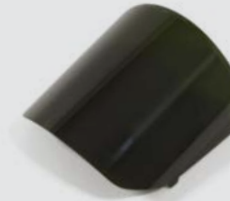
→ Vision-Link™ 650 lumen helmet lighting system



→ Quiet-Link™ Ear defenders  
Comes standard with NIOSH headtop.  
US Patent No. US D788,991 S.



→ Safety Lens  
Anti-fog / Anti-Scratch  
Available as yellow tinted (pictured), mirror tinted, or smoke tinted.



→ Safety Lens  
Infrared (Shade 5)



→ High Heat IR5 Gold Coated Visor  
(Radiant Heat only.)



→ High Heat IR5 Visor  
(Radiant Heat only.)



→ Tear-off Lens  
Available in packs of 50.



→ Ultra Magnifying Lens  
Available in 1.0, 1.5, 2.0 and 2.5.



→ FR Hose Cover  
Breathing tube not included.



→ Aluminized Hose Cover  
Breathing tube not included.

BUILD AND PRICE  
YOUR RESPIRATOR

Visit [rpbsafety.com/z-link/build](http://rpbsafety.com/z-link/build)  
or give us a call  
1-866-494-4599

# RPB® Z4® RESPIRATOR

## Immense capabilities.

With comfort and durability the top priority, RPB has created the most ergonomically balanced welding respirator available. Its lightweight design and multi-adjustment head suspension system ensures a stable fit that moves with you, reducing aches and strains on your neck, allowing you to enjoy life's best moments.

The Z4 boasts an optically-clear grinding visor and a flip-up welding visor designed to increase operator productivity. Visibility is further enhanced by clip-in shade 5 side windows offering maximum peripheral vision. These can also be switched out for window blockers which are included in the standard package.

The Z4 includes the large RPB ADF lens with 1.11 optical quality rating guaranteeing uniform shading and distortion free vision, allowing you to work safely and more comfortably for longer across different angles.

To further increase your comfort and stability, the Z4 can also be fitted with the Comfort-Link™ padding system for an individualized fit.

The Z4 offers the user superior protection in all key areas:



Respiratory



Eye



Hearing



Face/Neck



Protecting you for life's best moments.



## Features & Benefits

Large auto darkening welding lens with a 1.1.1 rating. Variable lens shade (9-13).

Replaceable impact and ADF lenses for ease of maintenance.  
Optional magnifying lens available.

Flip up welding visor for optimum vision during grinding while maintaining respiratory protection.

Optimum vision with a clear replaceable grinding lens - ANSI Z87+ (EN166) approved.

Loose-fitting design means no fit testing is required. This allows for facial hair and glasses without compromising safety.

The dual air distribution system delivers 75% of air supply to your breathe zone via a multi-directional outlet. The remaining 25% is directed over the grinding visor to prevent fogging.



<< Shown without hood for visual purposes only.

Vision-Link™ light mount point

Aerodynamic shell design deflects fumes away from user.

Comes standard with window blockers, or optional shade 5 side windows are also available, for increased peripheral vision.

Breathing tube holder on cape to stabilize helmet.

Optional FR breathing tube cover. FR breathing tube cover available to increase the life of the breathing tube.

Comfortable multi-adjustment head suspension system - ergonomically balanced to reduce fatigue. Optional Comfort-Link™ padding system provides further comfort and stability.

Quick fit bayonet lens replacement.

Lightweight headtop weighing just 1.77lbs (805g) with ADF and cape, that's up to 23% lighter than other professional brands available.

FR rated head cover and cape.

All parts can be purchased individually for easy maintenance and servicing.

For more information visit [rpbsafety.com/z4](http://rpbsafety.com/z4)

## Certifications

ISO9001  
CERTIFIED COMPANY

National Institute for Occupational Safety and Health  
**NIOSH**  
PAPR & SAR Type C

**ANSI**  
S3.19  
HEARING PROTECTION  
Only in conjunction with 18-524 earmuffs.  
Z87+  
EYE & FACE PROTECTION  
Z87W  
WELDING EYE PROTECTION

BSI Certified Product  
AS/NZS 1716:2012  
BMP# 714303  
RESPIRATORY PROTECTION

AS/NZS 1337.1:2010  
BMP# 714304  
EYE & FACE PROTECTION

AS/NZS 1338.1:2012  
BMP# 714305  
WELDING EYE PROTECTION

CE 2797

EN12941:1998  
+A2:2008 TH3 P R SL  
RESPIRATORY PROTECTION

EN352-1:2002  
HEARING PROTECTION  
Only in conjunction with 18-524 earmuffs.

EN166:2001 CLASS 1B  
EYE & FACE PROTECTION

EN379:2003+A1:2009  
and EN175:1997  
WELDING EYE PROTECTION

**SEI**  
Certified Model  
Modèle certifié

CSA Z94.3-15  
EYE & FACE PROTECTION  
Class 7D and 7B Respirator Facepiece  
PROTECTION DES YEUX ET DU VISAGE  
Masque respiratoire classe 7D et 7B

**MADE IN THE USA**  
\*From local & globally sourced components

**rpb**

# Build Your RPB® Z4® Respirator

Note: Not all configurations may be available in your region.

## Your Headtop



### 1 Choose Your Cape



→ FR Shoulder Cape



→ FR Face Seal

### 2 Choose Your Air Supply



→ PX5® (PAPR)



→ C40™ Climate Control Device (SAR)



→ Constant Flow Valve (SAR)

### 3 Choose Your Upgrades



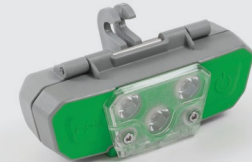
Comms-Link™ In-helmet communication system



FR Hose Cover  
Breathing tube not included.



Comfort-Link™ Side padding system



Vision-Link™ 650 lumen helmet lighting system



Ultra Magnifying Lens  
Available in 1.0, 1.5, 2.0 and 2.5.



Quiet-Slim™ Earmuffs  
Comes standard with headtop.

BUILD AND PRICE YOUR RESPIRATOR

Visit [rpbsafety.com/z4/build](http://rpbsafety.com/z4/build)  
or give us a call  
1-866-494-4599



# RPB® Z3™ RESPIRATOR

## Uncompromised outlook.

The Z3 welding respirator combines RPB's high quality breathing principles with leading optical technology to modernize the classic welding visor.

Exceeding industry standards while delivering uncompromised comfort, the Z3 ensures you can perform at your best while receiving clean, filtered breathing air. Constructed from high performance nylon, the Z3 can withstand extreme temperatures without distortion.

The Z3 includes the large RPB ADF lens with 1.1.1.1 optical quality rating guaranteeing uniform shading and distortion free vision, allowing you to work safely and more comfortably for longer across different angles.

The Z3 offers the user superior protection in the following key areas:



Respiratory

Eye

Face/Neck

Protecting you for life's best moments.



## Features & Benefits

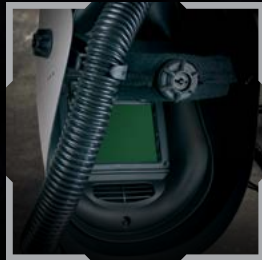
Lightweight helmet 26.6 ounces (755g) with ADF.

Heat reflecting, light gray shell manufactured from high temperature impact nylon.

Large auto darkening welding lenses with a 1.1.1.1 rating. Variable lens shade (9-13).

Replaceable impact lens and removable ADF lens.  
Optional magnifying lens available.

Adjustable air direction for maximum comfort.



Enlarged mouth and nose area to reduce CO accumulation.

Center positioned air inlet brings air to the breathe zone.

Breathing tube bracket to balance the headtop.

Smooth rounded edge for additional comfort.

Easily replaced face seal.

Aerodynamic shell deflects fumes away from user.

All parts can be purchased individually for easy maintenance and servicing.

For more information visit [rpbsafety.com/z3](http://rpbsafety.com/z3)

## Certifications

**ISO9001**  
CERTIFIED COMPANY

National Institute for Occupational Safety and Health  
**NIOSH**  
PAPR & SAR Type C

**ANSI**  
Z89.1  
HARD HAT PROTECTION  
Not all configurations conform to this standard. Please visit [rpbsafety.com](http://rpbsafety.com) for more details.

**Z87+**  
EYE & FACE PROTECTION

**Z87W**  
WELDING EYE PROTECTION

# Build Your RPB® Z3™ Respirator

Note: Not all configurations may be available in your region.

## Your Headtop



## 1 Choose Your Air Supply



→ PX4 Air® (PAPR)



→ C40™ Climate Control Device (SAR)



→ Constant Flow Valve (SAR)



→ Cold or Hot Tube



→ Flow Control Valve (SAR)

## 2 Choose Your Upgrades



Ultra Magnifying Lens  
Available in 1.0, 1.5, 2.0 and 2.5.



Hard Hat



FR Hose Cover  
Breathing tube not included.

BUILD AND PRICE  
YOUR RESPIRATOR

Visit [rpbsafety.com/z3-welder/build](http://rpbsafety.com/z3-welder/build)  
or give us a call  
1-866-494-4599



# POWERED AIR PX5® PAPR

## Respiratory protection reimagined.

The RPB PX5 changes the way people experience clean filtered air across multiple industries – from medical and chemical settings, through to the profoundly harsh environments of foundries.

The PX5 is the result of years of product refinement, designed with new functional capabilities, increasing performance while enhancing the way you experience comfort. The PX5 redefines what it means to be a powered air purifying respirator.

Boasting a robust yet compact design, the PX5 weighs just 2.55lbs as a complete system. With strategic weight distribution through its vertical mounting position and support from our flexi-belt system, the PX5 contours to the user to maximize comfort and stability.

Designed with sleek considered surfaces, and a quick release mount lock system for ease of decontamination, the PX5 is certified to IP65 rating in use and IP67 rating with cleaning kit in place.





## Features & Benefits

Weighing just 2.55lbs, the sleek and compact design maximizes comfort, vertically mounting to contour to the wearer and is supported by our flexi-belt system.

Visual, audible and vibrating alarms alert you when the battery level is low, or when airflow falls below the minimum requirements due to the filter needing replacing or when airflow is obstructed.

Intuitive LED user interface indicates airflow, fan speed, and battery level.



The PX5 unit attaches to our flexi-belt (fitted with either standard or FR rated belt) via our intuitive mount lock system. The unit is easily detached for cleaning and storage.

■ **Filter Safety** - The filter door cannot mount to the unit unless a filter is fixed in place.

■ **Ingress Protection** - With a completely sealed housing, the PX5 has been certified to IP65 rating in use and certified to IP67 rating with cleaning kit in place.

■ **HE Filter** – Manufactured from ULPA media which removes up to 99.97% of particulates down to 0.12 microns. **Replace the pre-filter daily and install spark arrestor to protect and extend the life of the main filter.**



■ **Sealed inside the unit during operation**, the long-life lithium-ion battery is protected from moisture and will not disconnect or bump off while operating.

For more information visit [rpbsafety.com/px5](http://rpbsafety.com/px5)

## Certifications

**ISO9001**  
CERTIFIED COMPANY

**NIOSH**  
National Institute for Occupational Safety and Health  
Only in conjunction with approved respirator.

**CE 2797**  
EN12941:1998  
+A2:2008 TH3 P R SL  
RESPIRATORY PROTECTION  
Only in conjunction with approved respirator.

**BSI Certified Product**  
AS/NZS 1716:2012  
BMP# 714303  
RESPIRATORY PROTECTION

**MADE IN THE USA**  
\*From local & globally sourced components

**rpb**

# SUPPLIED AIR SOLUTIONS

## Air monitoring, filtration, and supply.

Our supplied air and air monitoring range gives users confidence in the air they breathe.

Detecting toxic gases, filtering the air supply, and controlling supplied air temperatures removes safety concerns and discomfort, enabling users to sustain a higher level of performance for longer. Experience the RPB difference with our supplied air and air monitoring range.



## Features & Benefits C40™ Climate Control Device

The C40 heats and cools supplied air to suit your environment. Cool incoming air by up to 52°F (29°C) or heat it by up to 33°F (18°C) or any range in between simply by sliding the lever.

■ Easily control your temperature with the slide of a lever.

■ Air inlet swivels 360° to sit comfortably on your hip.

Made from lightweight, robust materials - weighs 11.6 ounces (329g), including belt. ■

The C40 increases your safety and comfort, by keeping you at your optimum temperature, so you don't suffer heat exhaustion or chilling.

US Patent No. US 9,599,372.  
\*Other flow devices are available.

■ Exhausted air is directed away from your body, eliminating the need for a heat shield.

## Radex® Airline Filter

The Radex airline filter exceeds industry standards. With its large capacity 6-stage filter cartridge that removes moisture, odor, and particulates you can be assured you and your team won't suffer the consequences of breathing contaminated air.



## GX4® Gas Monitor

The GX4 gives you complete confidence that the air that you and your team are breathing is safe. Detecting up to four gases simultaneously (including, CO, O<sub>2</sub> & H<sub>2</sub>S) the GX4 displays the air quality in real time through any connect device.



## RPB® RZ Fitting

The RZ fitting is exclusive to RPB and has been designed to be incompatible with any other fittings on the market. It will only connect to an RPB breathing air system, giving you peace of mind that the air you are breathing is safe.



For more information visit  
[rpb.com/air-monitoring-filtration-supply](http://rpb.com/air-monitoring-filtration-supply)

Protecting people for  
life's best moments drives  
everything we do.



Protecting you for life's best moments.



# WANT TO KNOW MORE? CONTACT US

[rpbsafety.com/industrial](https://rpbsafety.com/industrial)

Request a quote [rpbsafety.com/industrial/request-a-quote](https://rpbsafety.com/industrial/request-a-quote)

Start your 30 day trial [rpbsafety.com/industrial/buy-to-try](https://rpbsafety.com/industrial/buy-to-try)

Or call us toll-free at 1-866-494-4599



[youtube.com/rpbsafety](https://youtube.com/rpbsafety)



[linkedin.com/company/rpbsafety](https://linkedin.com/company/rpbsafety)



## WARNING

## PRODUCT SELECTION

- 1. Determine what type of protection is required for your activity.** As applicable, check your workplace safety program, respiratory protection program, and standards and regulations for your activity or industry.
- 2. Check product specifications.** Contact RPB® or check the product instruction manual (downloadable from [rpbsafety.com](https://rpbsafety.com)) for complete specifications, including approvals, standards, and regulations to which the product conforms.
- 3. Make sure you have a complete system.** Verify that you have or are purchasing all required components. System requirements are available from RPB® or in product instruction manuals.

**Selecting inappropriate or incomplete equipment, including the use of counterfeit or non-RPB® parts, can result in inadequate protection and will void the NIOSH approval of the entire respirator.**

Copyright ©2020 RPB IP, LLC. All rights reserved.

All materials contained in this publication are protected by United States copyright law and may not be reproduced, distributed, transmitted, displayed, published or broadcast without the prior written permission of RPB IP, LLC. You may not alter or remove any trademark, copyright or other notice from copies of the content.

### Trademarks and Other Intellectual Property

All trademarks, service marks, and logos used in this publication, both registered and unregistered, are the trademarks, service marks, or logos of their respective owners. The green and gray color combination is a registered trademark of RPB IP, LLC. All rights in the RPB Intellectual Property contained in this publication, including copyright, trademarks, service marks, trade secret, and patent rights are reserved. RPB Intellectual Property means any patent, patented articles, patent applications, designs, industrial designs, copyrights, software, source code, database rights, moral rights, inventions, techniques, technical data, trade secrets, know-how, brands, trademarks, trade names, slogans, logos, and any other common law and proprietary rights, whether registered or unregistered anywhere in the world, that are owned by, developed in whole or in part by, or licensed by RPB IP, LLC.

Dupont™ Tyvek® and Tychem® are registered trademarks of E.I. du Pont de Nemours and Company or its affiliates.

*Protecting you for life's best moments.*

