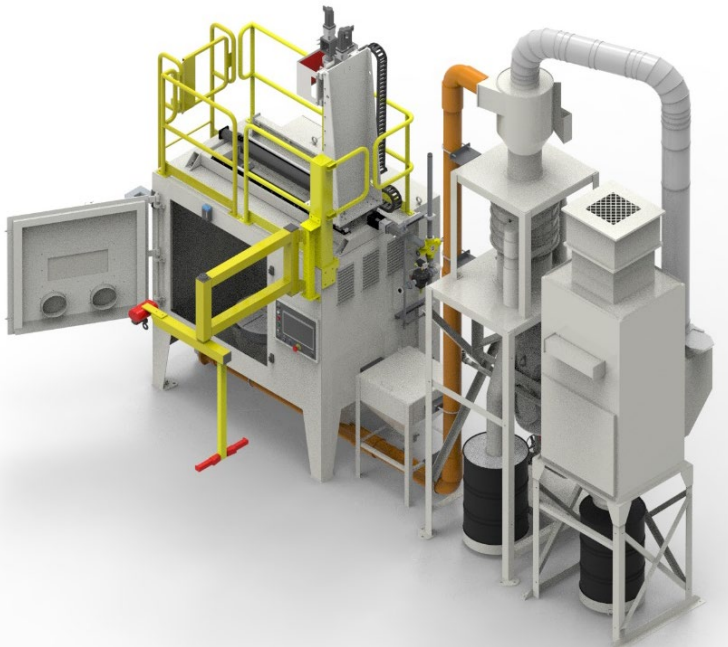


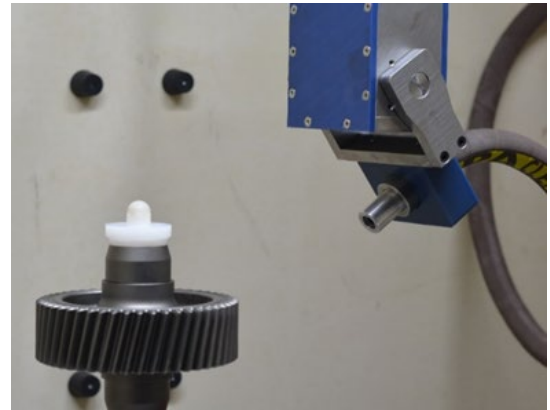
This compact abrasive blasting machine includes cabinet, single media system, dust collector, cyclone, classifier, four-axis gantry robot nozzle manipulator and one axis turntable.

Blast Cabinet Enclosure 5' 6" H x 4' D x 6' W (other sizes available). ¼" – ½" A36 steel welded construction. Powder coated finish.



Gantry Robot Nozzle Manipulator - The closed loop-controlled nozzle manipulator is designed to provide programmable coordinated motion in the horizontal (X-Axis), vertical (Z-Axis), rotary wrist (B-Axis), and miter (A-Axis) directions.

Rotary Turntable - C-Axis is a horizontally mounted table with a 24-inch outside diameter and 250 lb. on center capacity. Programmable C-Axis operated in both indexing mode and spindle rotary mode (depending upon control selected).



Pressure Blast Generator - The abrasive blasting media is fed into the compressed air stream from a six cubic foot capacity pressure vessel. Includes an Electronics, Inc., MFD-P1 Sensor for monitoring of abrasive media flow, a Proportion-Air air volume booster with electronic air pressure regulator for air pressure, and media level sensor.

Media Cleaning and Classification System - A vacuum recovery system pulls media from the bottom of the machine to a cyclone separator where dust and fines are removed. A classifier then screens the media, removing additional fines and oversized media.

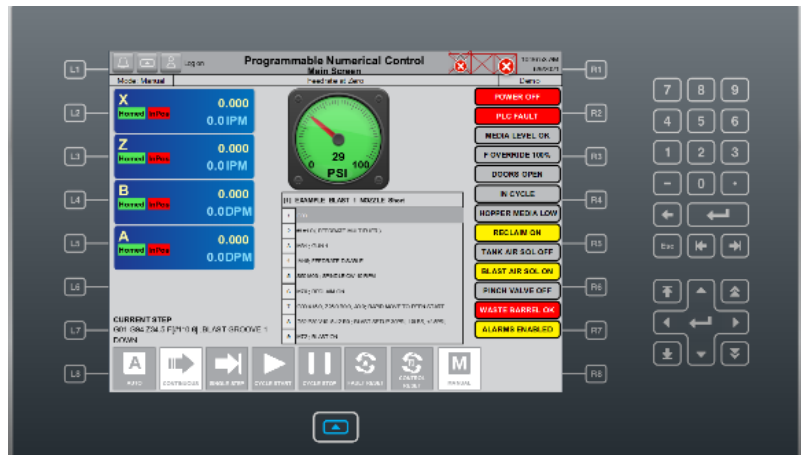
Dust Collector System - Compact cartridge style dust collector with auto pulse and HEPA filter.

Auto Load Hopper - Stores abrasive blast media and adds media to the system when low.



Control System Options include FANUC Oi-f, Rockwell Automation PNC, Delta Tau Power Brick (Fall 2022) with each control offering:

- Standard M and G code programming.
- Visual Shot Peening™ - Our graphical interface (HMI) that displays key process variables including motion, air pressure, shot flow, program status, and alarm status.
- Teach Pendant – is included to facilitate programming.
- Process Monitoring - Alarms include machine status such as 'door open' or 'reclaim not on', HI/LOW shot flow, HI/LOW air pressure, X, Y, A, B, and C axis drive faults including speed, following error and over-travel.
- Optional Data Logging - Machine events are logged to an SQL database for analysis.



Additional Options Include:

- Cabinet mounted jib crane with 250 lb. capacity.
- Optional manual blast station.