

www.bistaterubber.com



FLEXOWELL®
 Your full system experts!

FLEXOWELL belts are ideal for power, cement, steel mills, scrap recycling, pulp & paper mills, mine processing, grain and various other industries. **Bi-State Rubber Inc.** is the only Flexowell sales and manufacturing company in North America. From replacement belts to new projects we provide the highest quality and longest lasting belt available. Flexowell Vertical/Incline Pocket Belts are the biggest in the industry with sidewall heights up to 24" tall and belt widths up to 72" wide.

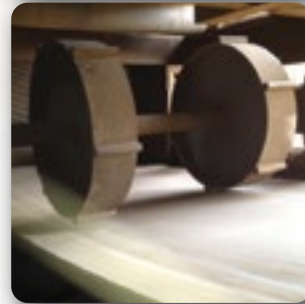


Conveying



Flexowell Pocket Belt

Cleaning



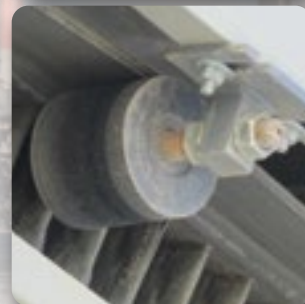
Flexowell Beater Pulley

Guiding



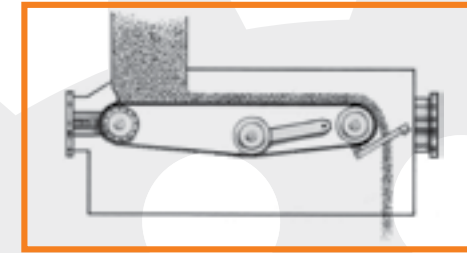
FGR-260 Guide Wheel

Support



BSR-UGR Stub Idler

WEIGH FEEDER BELTS



Weigh feeder belts are fabricated belts used in many material handling plants to measure bulk material going across the belt. Bi-State Rubber specializes in the fabrication of these belts for all manufacturers.

Flanges/Sidewalls/Guides - Most feeder belts run flat. Flanges or sidewalls are used to keep material from overflowing. Shown are some of the more common styles. All styles are available in standard and high-temp compounds.

Guides are used to keep the belt from tracking side to side. A guide which fits into a groove in the pulleys is hot vulcanized on the bottom side of the belt.



SOLID FLANGE



DRILLED AND SLIT



BAYED OUT FLANGE



CORRUGATED SIDEWALL



NOTCHED BOTTOM TRACKING GUIDE

Splices - Belt ends can be joined using mechanical fasteners or vulcanized endless. Such factors as accuracy, durability, ease of change out, spillage and price play a role in determining which style is best for your application. The BSRX-1 and BSRX-2 fasteners are recessed and rubber covered to enable quick change out with minimal effect on belt accuracy.



VULCANIZED ENDLESS



MECHANICAL FASTENER BSR-X1



MECHANICAL FASTENER BSR-X2



CONVENTIONAL FASTENER

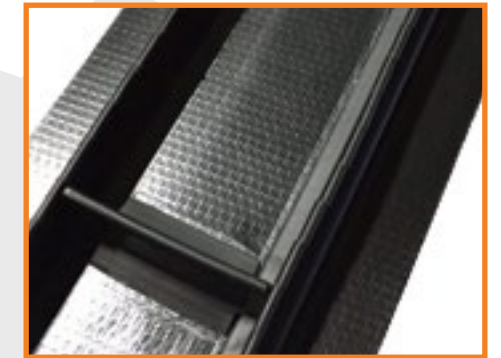
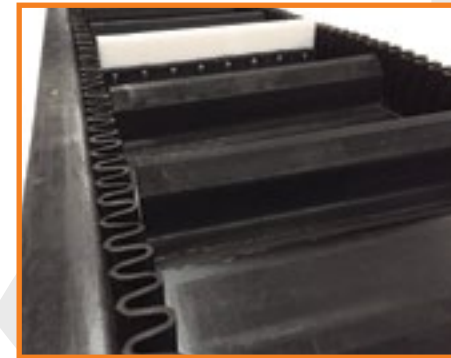


OPEN ENDED AND/OR PUNCHED

Base Conveyor Belts - Bi-State Rubber only fabricates on branded belts from reputable manufacturers. No unbranded import belting is used in the manufacturing of our belts. We also have the most choices available on the market for feeder belts including Fire Resistant, EPDM high temperature, RMA Grade 2, and RMA Grade 1 for more abrasive conveying applications.



CUSTOM FABRICATED BELTS



With over 47 years of experience, whatever your conveying needs are, we can help.

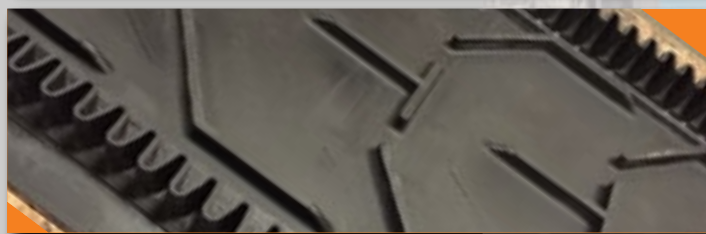
We are the Material Handling Experts. Let us Design and Engineer a belt that works for your unique system.



- Cleat-Lock Integrally Molded Cleats with Drilled and Slit BSR Vanner Edge Sides.



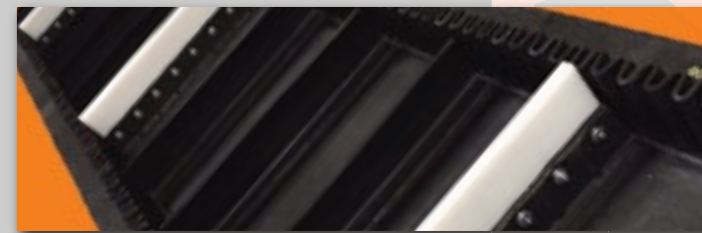
- Beefy 'T' style cleat with BARE Bottom Base Belt.



- Integrally Molded Cleats with Corrugated Sidewall for the Frac Industry.



- Vanner Edge Feed Belt with shallow Aluminum cleats.



- Flexowell Belt with UHMW insert to help with material reclaim.



- Drilled and Slit Vanner Edge with Integrally Molded Cleats.



- Unique 'T' Style Cleated Polyurethane Belt with slit Vanner Edge.



- Custom made Guides

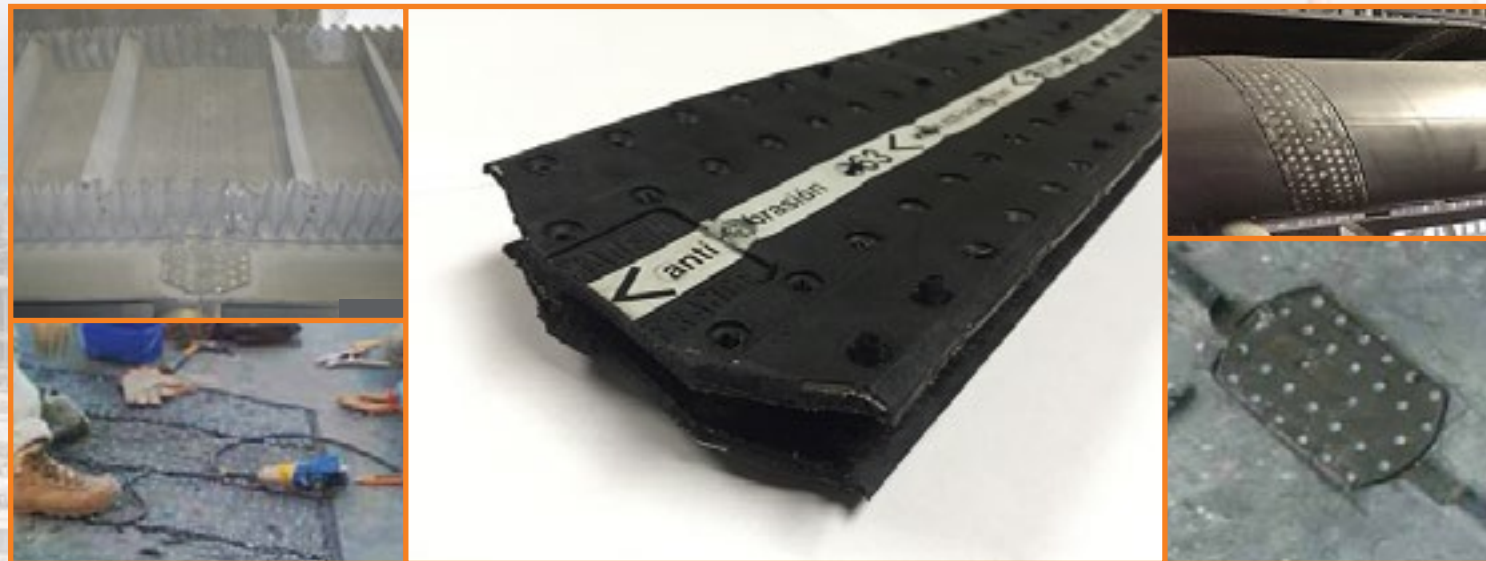
MAGNETIC SEPARATOR BELTS



"1 Bi 1" is a unique name for a unique product. Not only does it stand for the "tough" and "reliable" 1-inch wide by 1-inch high cleat construction, but also for the way we make this belt. 1 cleat at a time to meet your specifications.

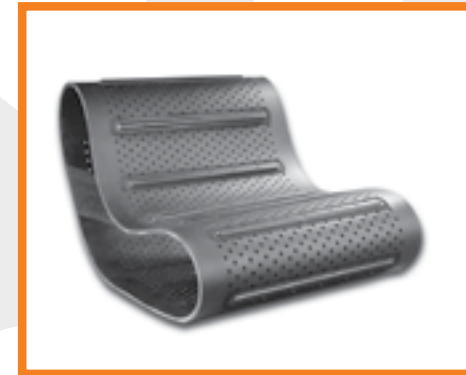
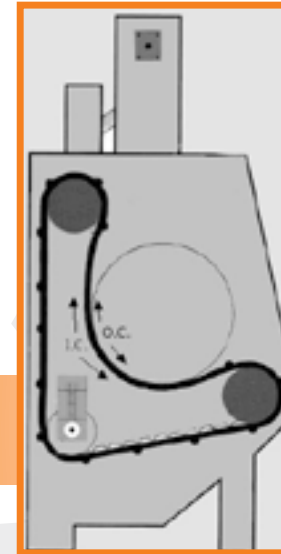
- ▶ Cleats are hot vulcanized to the base belt making them an integral part of the top cover of the belt.
- ▶ 1" thickness ensures our cleats are rigid enough not to flex and tear as can happen if thinner cleats are used.
- ▶ Bolted on metal cleats used by other manufacturers can cause damage to the equipment or belts if they are pulled loose.
- ▶ Belt length, width and number of cleats are custom made to your requirements.
- ▶ Stainless steel non-magnetic hinged mechanical fasteners are riveted to the belt for the greatest durability and strength. Stainless steel also benefits in that it does not interfere with the magnet system. (Vulcanized endless style also available)
- ▶ Fire resistant belt covers are available.

SUPER SCREW FLEXIBLE FASTENER

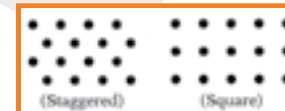


Minet Super screw fastener is a rubber fastener reinforced with a multi-ply textile carcass and steel inserts. The fastener is attached to the belt using self tapping screws. No special tools are required. This is a leak proof joint with no hinge. No material can sift through the splice. Screws reach farther back into the belt, which provides for better holding strength. Splice strength is comparable to a vulcanized splice.

TUMBLE AND BLAST BELTS



Bi-State Rubber manufactures replacement belts for most manufactures of rubber belted shot blast machines including Wheelabrator, Pangborn, Viking, Bronco, Kelco, C/M, Sinto, BCP, DeLong, MP Tech, Coyote & Gibson Equipment.



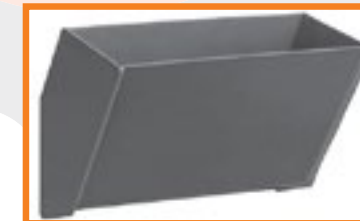
Holes are available in both staggered and square patterns.
 1/8", 5/32", 3/16", 1/4", 5/16", 3/8"



Cleats and guides are available to OEM specifications or we can custom design a belt to improve the productivity and life expectancy of your belt.

3 ply and 4 ply belting are available with the most durable covers in the industry. Available in 3/16" x 1/6", 1/4" x 1/16" and 3/8" x 3/32" covers

ELEVATOR BELTS AND BUCKETS

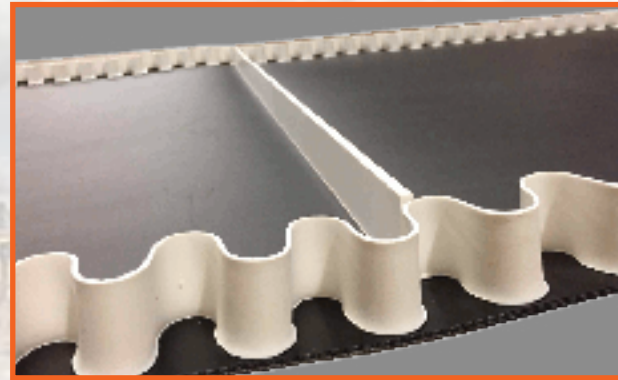
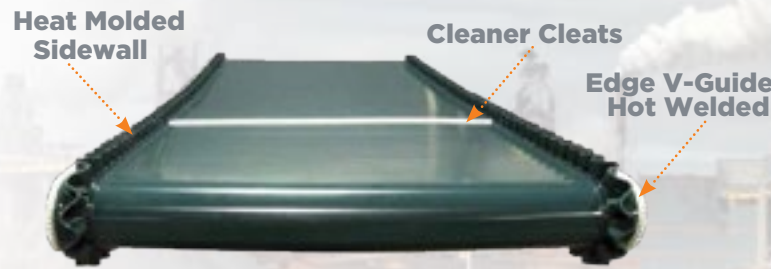


Bi-State Rubber can supply both rubber and PVC bucket elevator belting for all industries. Belts can be provided punched to all industry standard patterns.

Elevator buckets are available in a wide variety of materials including fabricated steel, ductile iron, nylon and urethane.



PVC AND PU CONVEYOR BELTS



Solutions for efficient separating

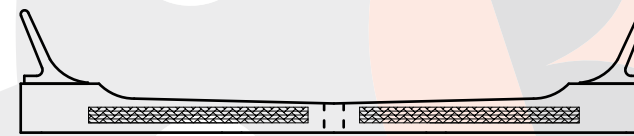
FILTER BELTS



Rubber Drainage Belt for HBF (Horizontal Vacuum Belt Filter)

DESIGN AND STRUCTURES

Drainage belts can be supplied in different designs. Here are the most common:



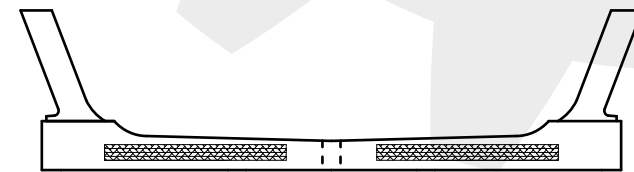
With lateral straight curb (height 75 or 125 mm) applied by hot vulcanization or by cold bonding by means of specific cements.



With lifting flat curbs and inner rubber guide obtained in a single piece by mold.



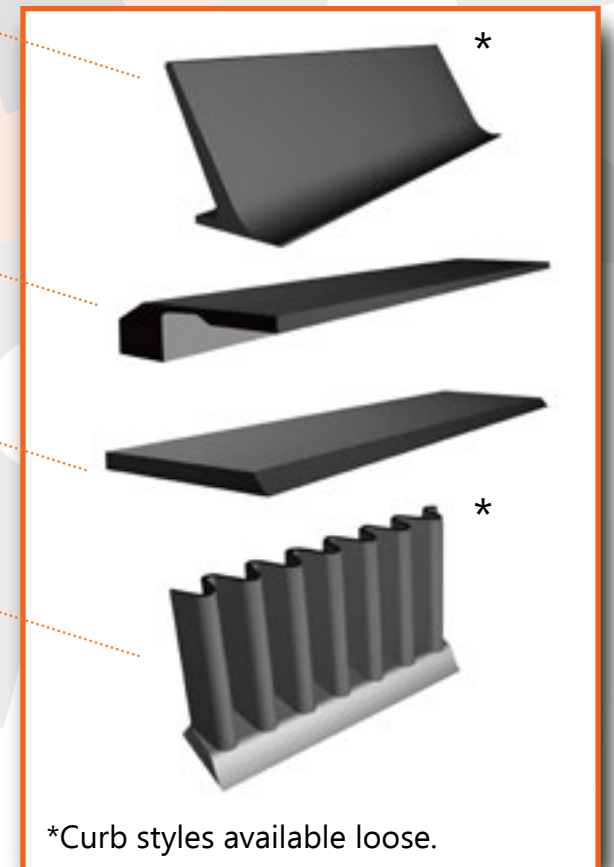
With flat trapezoidal curbs applied cold bonded by means of specific cements.



With corrugated lateral curbs (height up to 130mm) applied by cold bonding by means of specific cements.

Filterbelt are produced in the following versions:

- Endless, by hot vulcanized splice
- Open rolls to be spliced on site by hot vulcanization or by cold bonding
- With applied or loose lateral curbs according to the dimensions of the drainage belt



*Curb styles available loose.



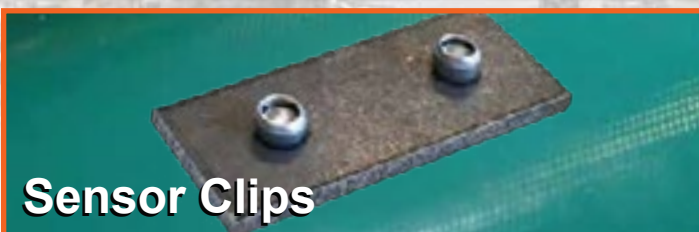
Eddy Current



Magnetic Separators



Optical Sorter



Sensor Clips

- A magnetic field throws non-ferrous metals forward into a bin. Bi-State Rubber also offers abrasion resistant options for longer belt life.

- Attracts ferrous metals and drops them into a bin. Bi-State Rubber uses a high abrasion and impact resistant belt to reduce downtime.

- High speed optical and laser sorters separate different materials. Bi-State Rubber belts are designed to increase sorting reliability.

- Specialty fabrication is available for any application challenge that you have.

Van Gorp®

THE FINEST AND MOST COMPLETE LINE OF CONVEYOR PULLEYS.



Elevator

With continuously welded disc-to-rim construction and compression hubs.



H·D·R®, XT-reme™ & Mine Duty

Three classes of drums with rims formed in custom-designed crowning rolls by a cold "forming" process that increases the strength of the steel.



Snap Back®

High tensile strength rubber or urethane lagging, encased in a steel jacket, displaces upon belt contact. When belt contact is broken, the rubber actually "snaps back" to its original height automatically cleaning itself.

Conveyor Pulley Assemblies

Pulley, Lagging, Shaft and Bearing Assemblies are available on application. Whatever your pulley requirements, let Van Gorp Engineers assist you in determining the proper pulley, lagging, bearing type and related components you need for maximum efficiency of operation.



Quarry Duty Wing

Designed for long life in the most rugged applications with 3/4" x 2" contact bars, 1/2" wings and submerged arc hub to end disc welds. The wings are approximately 5" tall to reduce fold over.



Lagging

Standard lagging is 60±5 durometer vulcanized SBR. Vulcanized Neoprene, Rough Top, Slide Lag, Ceramic and many others are available.



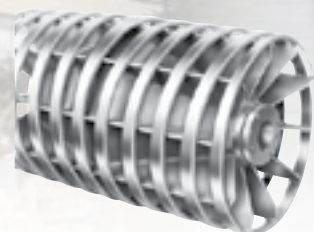
Spiral Drum

This unique design reduces the possibility of material build-up between the belt and the pulley in applications where self-cleaning wing type pulleys cannot be used.



Turn Clean®, XT-reme™ & Extra Heavy Duty

Three classes of wings built strong and water tight. Double cone design features individual gussets welded continuously to each wing and hub for longer life.



Spiral Wing

Rotations of the pulley automatically starts the self-cleaning action, discharging foreign material to the side of the conveyor.

Primary Conveyor Belt Cleaners



MICRO ERASER™

The Micro Eraser is your answer for portable equipment with tight clearance issues. Designed with our 6" tall blade, it works best on belts up to 48" wide with head pulleys of 28" diameter or less. This economical but powerful system is available in pin style only.



ERASER™

The Eraser system is our standard industrial workhorse. This rugged yet versatile cleaner is built around our exclusive patented Perma-Torque tensioning system. It is equipped with a 7.25" tall blade, and can handle most of your demanding applications with ease.



SUPER ERASER™

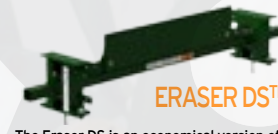
The Super Eraser is a Mine Duty cleaner. It has a heavy-duty box steel mainframe and a massive 12" blade. If you're dealing with high speed, high tonnage belts, the Super Eraser was built for you. Available only with Safe Torque.



SUPER ERASER HD™

The Super Eraser HD is designed for extreme strength and durability with a heavy-duty steel mainframe and corrosion-resistant, galvanized Schedule 160 pipe stub ends. Available in pin style or with Safe Torque.

Secondary



ERASER DS™

The Eraser DS is an economical version of our XTC cleaner, with a powder-coated tube stock steel mainframe for strength and durability. It is specifically designed for reversing conveyor belt applications. The DS uses tungsten carbide blades.



SUPER-G™

The Super-G's "pass-through" mainframe design allows material to freely fall through it, keeping your systems online with little to no maintenance. This system is based on the same heavy duty mainframe and Perma-Torque tensioner as our Eraser system.



V-MAX V-PLOW™

Dirt and rocks can get caught between the belt and pulleys, ripping holes and creating hours of costly downtime. The V-Max V-Plow provides adjustable down force, so nothing gets through.

Skirting

SNAP-LOC™



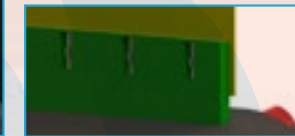
Snap-Loc is the standard for dust containment skirting. This straightforward, no-nonsense design for dust control snaps into standard unistrut railing that can be bolted or welded into place. A single pin at the tail end of the conveyor holds the skirting in place and the natural travel of the conveyor belt tensions the skirting, so there is no need to readjust it, saving you hours in maintenance costs.

FOLD-N-SEAL™



The best of both worlds: material and dust containment in one unique solution. The primary seal keeps the material where it should be - on the belt. The secondary seal keeps dust and particulate material under control. Fold-n-Seal is available with Argonics' easy-to-use Wedge-Loc clamping system and is designed to work with almost all existing skirting clamping systems on the market.

LOAD ZONE CONTAINMENT SKIRTING



Designed to do one thing and to do it well: contain material at the transfer points on your belt line.

- Extra-rugged reinforced design with 1/4" steel
- Straight or 20° beveled edge
- Available in 60" and 96" lengths
- Varying heights and thicknesses available

Replacement Blades

Replacement blades use our proven Kryptane® polyurethane formula. They are designed as a direct retrofit- no adaptation necessary. The blades use a heavy-duty extruded aluminum insert.

Typically, our replacement blades have a two-to-one wear life over OEM blades.



FDA food-grade and MSHA approved flame-resistant formulas, along with FRAS (flame-resistant, anti-static) blades available.

Crown Bar Channel Cover

- Lasts 5 times longer than rubber channel cover.
- Available for 3/8" channel, 5/8" and 1" long legs available.
- Available in any length up to 25 feet.



SAFE TORQUE RATCHET SYSTEM

Our Safe Torque Ratchet System is available on most Argonics conveyor belt cleaning systems. Safe Torque offers the unique ability to tension a conveyor belt cleaning system with one hand, and is extremely useful in confined areas. The dust cap seals the system from fine particle contamination, common to many tensioners on the market.



Argonics is one of the country's largest producers of wear-resistant polyurethane products, providing high-performance urethane solutions at its state-of-the-art production facility. Whether you're producing concrete, manufacturing aggregate products, processing grain or mining precious metal, Argonics has built its reputation for providing cost-effective solutions for some of the most demanding applications.

CONVEYOR BELTING



Bi-State Rubber offers a full line of conveyor belting for various industries which include power plants, cement manufacturing, steel mills, foundries and paper mills throughout North America and the Caribbean

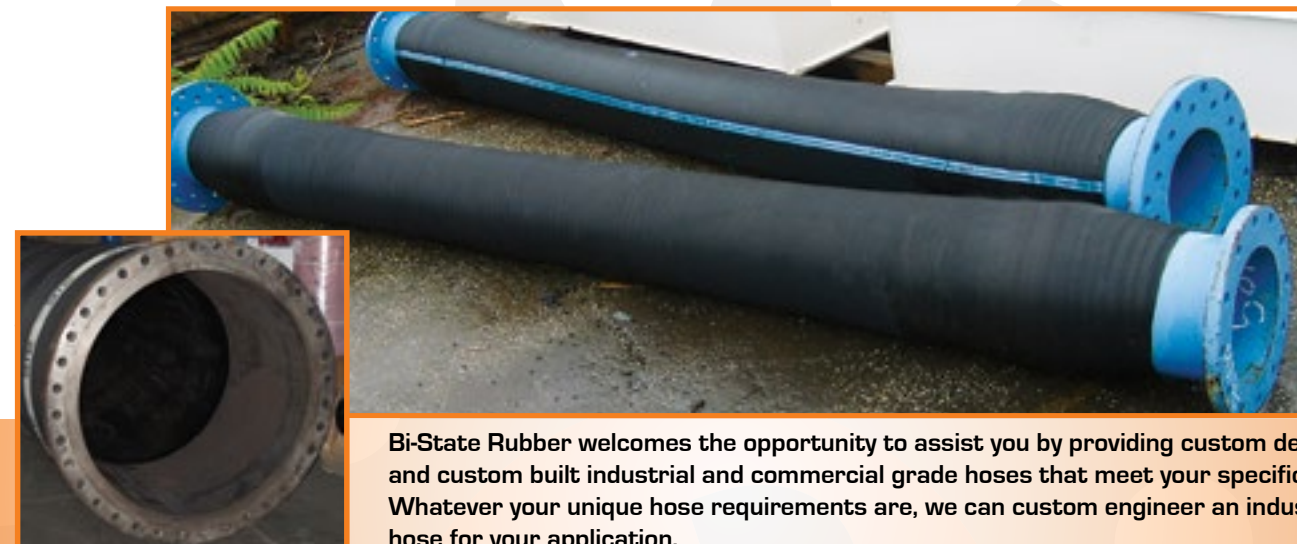
BI-STATE RUBBER OFFERS A VARIETY OF BELT COMPOUNDS AND FABRIC

- Engineered designed belting to meet demanding applications
- Multi-ply belts with 100-200 lbs fabrics up to 2000 PIW tension rating
- Straight Warp fabrics for severe cut and gouging problems
- Steel cord belts
- Hot material belts with 400 °F rated covers and fiberglass carcass to resist burn through
- Pipe or tube conveyor belts to prevent spillage
- MSHA and fire resistant covers available
- High Abrasion resistant covers for conveyor with heavy wear problems

FENNER DUNLOP
 ENGINEERED CONVEYOR SOLUTIONS



CUSTOM MANUFACTURED HOSES



Bi-State Rubber welcomes the opportunity to assist you by providing custom designed and custom built industrial and commercial grade hoses that meet your specific needs. Whatever your unique hose requirements are, we can custom engineer an industrial hose for your application.

Applications

- Mining & Material Handling Hose
- Dredge Hose
- Acid or Chemical Transfer Hose
- Food Grade - Food Handling Hose
- High Pressure Air Transfer
- Peristaltic Pump Hose Replacement
- Tank Truck Gravity Drop Hose
- Tan Gum Rubber Tubing
- Vacuum Loader Hose / Leaf Collector Hose
- Large Diameter Hose Couplings, Elbows & End Constructions
- Melt Shop / Heat & Flame Resistant Fiberglass Covered Hose

Construction

- Hose I.D.s from 1/2" to 42"
- Lengths up to 50' for most hose
- Heat resistant coverings - Nomex®, Fiberglass, Kevlar®
- Tube, cover and wall thickness per your requirements
- Smooth or corrugated inside or out
- Non-conductive or conductive
- Many polymers to choose from including: Pure gum, SBR, Neoprene, Nitrile, EPDM, Chlorobutyl, Hypalon®, Fluoroelastomers (Viton®), and Teflon®
- Hoses wired with standard wire, stainless steel, static wire, plastic (non-conductive) wire, steel hoops



VACUUM HOSES



BSR-LB801

Abrasion Resistant Light Duty Suction Hose

Applications: designed for suction and light blowing of lightweight abrasives such as rockwool, fiberglass, sawdust, grain, insulation and cement dust
Construction: SBR rubber blended with static carbon black, rigid PVC helix, smooth bore, corrugated O.D.
Temperature: -40 °F to 158 °F

I.D., Inches	2.5	3	4	5	6
O.D., Inches	2.91	3.44	4.03	5.03	6.07
PITCH, Inches	.56	.59	.65	.87	.87
MINIMUM BENDING RADIUS 72°F, Inches	2.5	3.0	4.0	5.0	9.0
WORKING PRESSURE 72°F, P.S.I.	18	13	10	8	8
VACUUM RATING 72°F, In. Hg	25.0	23.0	20.0	15.0	15.0
WEIGHT, Lbs./Ft.	.71	.92	1.50	1.68	2.40



BSR-RA801

Heavy Duty Abrasive Resistant Suction Hose

Applications: Designed for vacuum trucks or handling abrasives such as crushed rock, sand, pea gravel, cement, dry fertilizer, iron ore, and grains.
Construction: SBR rubber blended with static carbon black, rigid PVC helix, smooth bore, corrugated O.D.
Temperature: -40 °F to 158 °F

I.D., Inches	2	2.5	3	3.5	4	5	6	7	8
O.D., Inches	2.25	2.95	3.50	4.11	4.63	5.76	6.73	7.83	9.04
PITCH, Inches	.39	.56	.59	.64	.65	.87	.87	.87	.91
MINIMUM BENDING RADIUS 72°F, Inches	2.5	2.5	3.0	4.0	4.5	5.0	9.2	14.0	15.0
WORKING PRESSURE 72°F, P.S.I.	40	35	35	30	30	30	30	30	30
VACUUM RATING 72°F, In. Hg	29.0	29.0	29.0	29.0	29.0	29.0	29.0	27.0	27.0
WEIGHT, Lbs./Ft.	.50	.88	1.10	1.35	1.77	2.47	3.08	4.10	5.65



BSR-RH801

High Temperature Resistant Suction Hose

Applications: Heavy duty abrasive resistant suction hose where higher temperatures and abrasion are factors such as vacuum trucks or the handling of fly ash, crushed rock, sand, pea gravel, or cement powder.
Construction: EPDM rubber, polyethylene helix, metal helical wire, smooth bore, corrugated O.D.
Temperature: -40 °F to 220 °F

I.D., Inches	4	6	8
O.D., Inches	4.69	6.83	9.13
PITCH, Inches	.65	.87	.87
MINIMUM BENDING RADIUS 72°F, Inches	5.5	9.8	15.0
WORKING PRESSURE 72°F, P.S.I.	30	30	30
VACUUM RATING 72°F, In. Hg	29.8	28.0	27.0
WEIGHT, Lbs./Ft.	1.75	3.46	6.0



BSR-KL

Heavy Duty Suction and Discharge Hose

Applications: Heavy duty suction and discharge hose for use dewatering, rental construction industry and fish suction requiring higher working pressures.
Construction: Flexible PVC, rigid PVC helix, synthetic braiding, smooth bore, corrugated O.D.
Temperature Ranges: -13 °F to 140 °F

I.D., Inches	1.5	2	3	4	5	6	8
O.D., Inches	2.03	2.60	3.70	4.78	6.04	7.17	9.34
PITCH, Inches	.37	.43	.59	.65	.87	.93	1.07
MINIMUM BENDING RADIUS 72°F, Inches	2.5	4.0	6.3	7.1	9.0	10.2	15.7
WORKING PRESSURE 72°F, P.S.I.	110	100	100	75	70	70	60
VACUUM RATING 72°F, In. Hg	29.8	28.0	28.0	28.0	28.0	28.0	28.0
WEIGHT, Lbs./Ft.	.47	.70	1.13	1.74	2.97	3.88	5.54



BSR-KL-UBU

Heavy Duty Polyurethane with Static Wire

Application: Transfer of abrasive material - bulk unloading of rail cars and trucks
Construction: Flexible polyurethane tube, rigid PVC helix, synthetic braiding, smooth bore, copper static grounding wire.
Temperature Ranges: -13 °F to 140 °F

I.D., Inches	4	5	6
O.D., Inches	4.78	6.04	7.17
MINIMUM BENDING RADIUS 72°F, Inches	7.5	9.5	11.0
WORKING PRESSURE 72°F, P.S.I.	75	70	70
VACUUM RATING 72°F, In. Hg	28	28	28
WEIGHT, Lbs./Ft.	1.94	3.20	4.34



Interlocking Metal Hose for High Temperature Applications

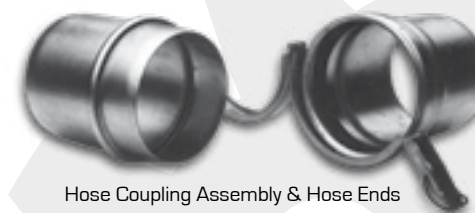
Applications: Dust and fume removal, ducting for heaters, fly ash removal, protective shielding and armor, hot air blower/suction, gas and semi-solid transfer, and for bulk unloading and loading of grains, pellets and powders.



Vacuum Truck Port Hose

Designed to meet O.E.M.'s specifications for serviceability
Construction: 1/8" - 1/4" abrasion resistant NR/SBR tube
 Multi-ply of high tensile square-woven polyester fabric. Dual high-tensile steel wire helix. Ozone and abrasion resistant SBR cover. Soft cuff ends.

VACUUM TRUCK ACCESSORIES



Hose Coupling Assembly & Hose Ends

Assembly

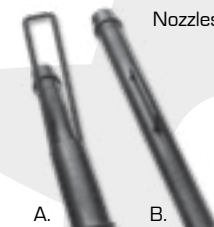
Includes Both Male And Female Fitting With Gasket And BL Clamp

Size	Part #
4" Assembly	BSR-4AB
6" Assembly	BSR-6AB
8" Assembly	BSR-8AB

Hose Ends

Individual Hose Ends As Needed

Size & Type	Part #
4" Male	BSR-4M
6" Male	BSR-6M
8" Male	BSR-8M
4" Female	BSR-4F
6" Female	BSR-6F
8" Female	BSR-8F



Nozzles

A. Production Nozzle	Part #
4" Aluminum	BSR-117 PA4
4" Steel	BSR-117 PS4
6" Aluminum	BSR-117 PA6
6" Steel	BSR-117 PS6

B. Bulk Nozzle	Part #
4" Aluminum	BSR-115 BA4
4" Steel	BSR-115 BS4
6" Aluminum	BSR-115 BA6
6" Steel	BSR-115 BS6



Elbows	Part #
4" - 45°	BSR-220-4
6" - 45°	BSR-220-6
8" - 45°	BSR-220-8
4" - 90°	BSR-200-4
6" - 90°	BSR-200-6
8" - 90°	BSR-200-8

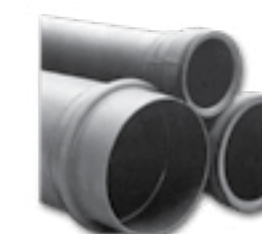
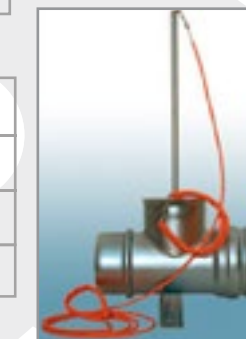


Reducers	Part #
6" x 4"	BSR-300-64
8" x 6"	BSR-300-86



Y Adapter	Part #
6" x 4" x 4"	BSR-Y644
8" x 4" x 4"	BSR-Y844
8" x 6" x 6"	BSR-Y866

Relief Valve	Part #
4"	BSR-600-4
6"	BSR-600-6
6"	BSR-600-8



Aluminum	Part #
4" x 10'	BSR-104A
4" x 20'	BSR-204A
6" x 10'	BSR-106A
6" x 20'	BSR-206A
8" x 10'	BSR-108A
8" x 20'	BSR-208A

Steel	Part #
6" x 10'	BSR-106S
6" x 20'	BSR-206S
8" x 10'	BSR-108S
8" x 20'	BSR-208S



Hold Together Clamp - BSR-BL
 Galvanized steel clamp holds hose ends (fittings) male and female securely together.

Power Lock Clamp - BSR-PL
 Galvanized steel clamp to hold hose ends (fittings) to hose. Spiral design is made to fit into corrugations of BSR-RA, LB, RH and KL series hoses.



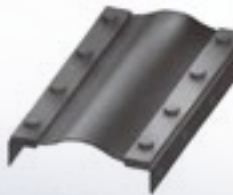
FLUE DUCT EXPANSION JOINTS



Bi-State Rubber offers a full line on Polymeric and Teflon expansion joints. We can supply the expansion joint material, accumulation pillows and new flanges. Expansion joints can be ship knocked down for field assembly or completely assembled.



Polymeric expansion joint material includes Viton, Chlorobutyl, and EPDM materials. Material can be rated up to 400 °F, offers excellent chemical resistance and is reinforced with fiberglass plies.



Teflon expansion joints offer excellent temperature and chemical resistance and are available with various constructions offering abrasion resistance and temperatures up to 1000 °F.



Composite expansion joints are used for high temperature applications up to 2000 °F. Can also be used for applications that have accumulation or abrasion problems.



Molded corner expansion joints are available in both Polymeric and Teflon expansion joints. Used primarily when space restrictions hamper the use of a flat belt radius corner design.

Bi-State Rubber offers metal expansion joints to be used in chemical and heat applications in the following designs:



Round Corner



Singled Miter Corner



Double Miter Corner

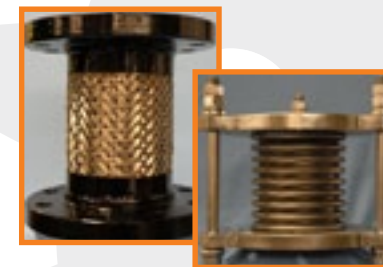


Camera Corner

PIPE EXPANSION JOINTS AND CONNECTORS



Bi-State Rubber offers a full line of rubber and metal expansion joint and connectors to help control vibration or thermal movement.



Metal expansion joints are available with many different end fitting configurations; including flanges, pipe thread and victaulic grooved weld on ends. With movement capabilities of 1/2" up to 16" axial, pressure ratings up to 300 PSI and temperature capabilities of nearly 1500 degrees F, there is a metal expansion joint to fit your application.

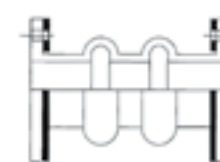


Pump connectors and pinch valve replacement sleeves are both available using numerous elastomers depending on the application. Pump connectors are designed to isolate noise and vibration. They are available in concentric and eccentric reducer and straight spool type. Bi-State Rubber can provide pinch valve sleeves for all major manufactures with ends that are flanged, beaded, or slip on style. Additional sleeve options include double wall thickness, reduced port, positive opening tabs and Teflon liner.



The industry standard spool type expansion joint is available with 0 to 4 arches depending on movement requirements and can be adapted to the most unusual or difficult applications. Available options include filled arches for abrasive applications, Teflon liners for severe chemical applications, soft cuff ends for slip on installation, and concentric and eccentric tapered joints for connecting different pipe sizes. Control units shown are used to limit the amount and direction of movement to within the design limits of the flexible connection.

BSR-SJ SPOOL TYPE (2 ARCH)



1/4" THRU 144"

BSR-SJ SLIP ON



1/4" THRU 24"

BSR-CJ CONCENTRIC (1 ARCH)



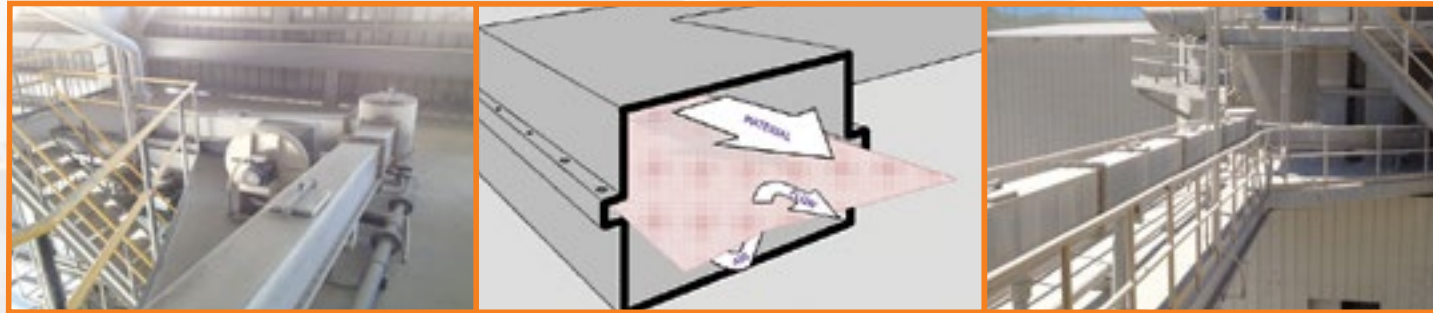
SIZED TO APPLICATION

BSR-EJ ECCENTRIC (1 ARCH)



SIZED TO APPLICATION

AIRSLIDE FABRIC AND WIRE MESH



Bi-State Rubber offers a full line of fabrics for air slide, live bottom silos, and aeration pads. In addition to various fabrics Bi-State Rubber can be of help on wire mesh products, which are sometimes used on top of the fabrics to ease impact or under the fabrics for support. Our fabrics can be furnished for various applications and conditions



PL-TT-5 Needled Polyester Airslide Fabric

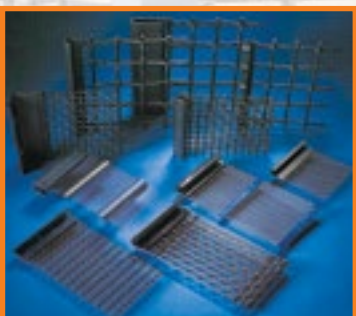
- Consistent air permeability
- Superior abrasion resistant
- Strongest scrim ply in the industry. Will not stretch or tear
- Easy to install. No stretching or heat sealing required
- Rot and mildew resistant.



Woven Polyester Airslide Fabric

FLUITEX® E impresses with a long service life; the extremely smooth surface offers effective protection against wear. The weaving technology provides even air resistance across the whole fabric surface and prevents caking. The fabrics feature a strong self-cleaning effect for the pores and surface.

FLUITEX® AD is the ideal fluidizing fabric for work processes at high temperatures. The extremely heat-resistant fabric is made from para-aramid fibers and easily withstands temperatures up to 482 °F.

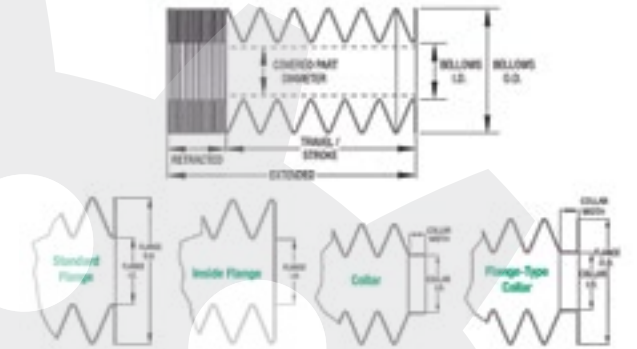


We offer a complete range of wire mesh and screen size openings, wire diameter, metal and weave types enabling us to provide you with the correct product for your application. Along with our extensive inventory we are capable of custom building to your exact specifications.

Available in following materials:

- Superloy - High Carbon Steel
- Ludloy - Oil Tempered. Provides superior abrasion resistance and good fatigue resistance.
- Astroloy - Stainless Steel. This metal excels when used in applications where the material is extremely abrasive and chemically corrosive.

BOOTS AND BELLOWS



Bi-State Rubber supplies many varieties of Boots & Bellows for various industries such as the power, cement, and foundries. We can custom make bellows from the information provided to us including everything from professional CAD drawings to hand sketches.

- Bi-State Rubber can fabricate bellows on a variety of materials such as Neoprene, Silicone, SBR, Nitrile (oil resistant), Hypalon, EPDM (heat resistant), and Teflon. Materials could vary from fabric reinforcements to wire inserted for strength and support.
- If a quick change out is needed, some bellows could be fabricated with a zipper for a quick easy change out.
- Flanged and soft cuff ends are the most popular styles, however, we can provide with any type of ends per your requirements. Please visit our website for a downloadable worksheet.

ACCESSORY ITEMS OFFERED BY BI-STATE RUBBER



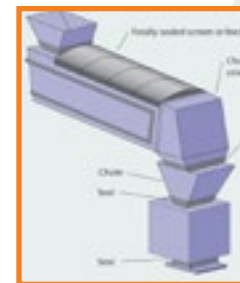
Conveyor Belt Idlers



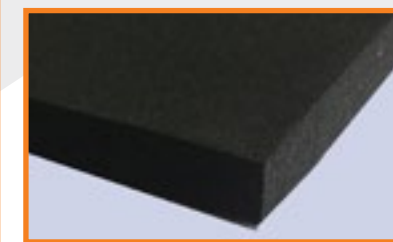
Skirtboard Rubber



Sheet rubber available in various compounds and thicknesses



Trellex Dust Seal Rubber



Sponge Rubber



Channel Rubber and other extruded products



Custom Molded Rubber and Urethane parts

Items offered to you by Bi-State Rubber.

I. BELTING

- ✓ A. Flexowell Incline Pocket Belts
- ✓ B. Weigh Feeder Belts
 - 1. Vulcanized Endless
 - 2. Mechanical Fastner
 - a. Rubber Covered
 - b. Conventional Splice
- ✓ C. Corrugated Sidewall Belts
- ✓ D. Eddy Current Belts
- ✓ E. Filter Belts
- ✓ F. Sampling Belts
- ✓ G. Conveyor Belting
- ✓ H. Elevator Belting
- ✓ I. Custom Cleated Belts
 - 1. Magnetic Separator Belts
 - 2. Tumble Belts/Mill Aprons
 - 3. Trencher Belting

II. BELTING HARDWARE & ACCESSORIES

- A. Flexco Fasteners
- B. Minet Fasteners
- C. Pulley Lagging
- D. Van Gorp Pulleys
- E. Conveyor System Idlers
- F. Skirtboard & Track Mount Skirting
- G. Argonics Belt Cleaning Systems
- H. Replacement Urethane Blades
- I. Conveyor System Covers
- J. Elevator Buckets & Bolts

III. SPOOL STYLE EXPANSION JOINTS

- A. Flanged Style
- B. Arch & Multiple Arch
- C. Tapered Eccentric, Concentric
- D. Slip Over Type
- E. Filled Arch & Open Arch
- F. Control Rods

IV. FLUE DUCT STYLE EXPANSION JOINTS

- ✓ A. Polymer Types (Viton, Florel, E.P.D.M. Neoprene)
- ✓ B. Fluoroplastic Types (Teflon, TFE)
- ✓ C. Composites (Hi-Temp)
- ✓ D. Insulation Pillows/Accumulation Barriers
- E. Metal Work (Baffles, Flanges, Back-Up Bars, Replacement Duct Work)

V. RUBBER PRODUCTS & URETHANE

- A. Sponge Rubber
- B. Sheet Rubber
- C. PSA Backed Rubber
- D. Rubber Matting
- E. Chute Lining
- F. Urethane Sheets
- G. Urethane Rollers
- H. Molded Rubber and Urethane Parts

VI. HOSE PRODUCTS & ACCESSORIES

- A. Vacuum hose
- B. Vacuum Truck Fittings, Nozzles & Accessories
- C. Material Handling Hose
- D. Flexible S.S. Hose & Fittings
- E. Steel & Aluminum Tubing
- F. Dredge Sleeves
- G. Pinch Valves
- H. Flexible Ducting
- I. Dust Hose
- J. Hose Couplings

VII. MISCELLANEOUS

- A. Variety of Bellow Products
- B. Silicone & Viton Rubber
- ✓ C. Tanker Truck Air Pads
- D. Air Slide Belt
- E. Specialty Rollers
- F. Belt Clamps
- G. Hi-Temp Insulating and Protective Covers & Guards
- ✓ H. Hi-Temp Gaskets & Seals
 - I. Power Transmission Belts
 - J. Power Transmission Hardware