



LARGE EQUIPMENT PAINT BOOTH BASICS 101



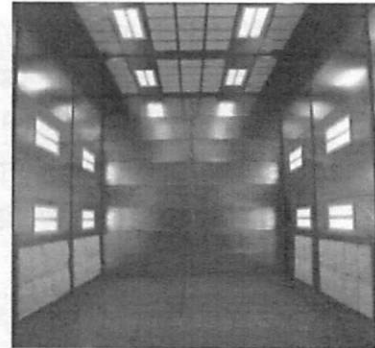
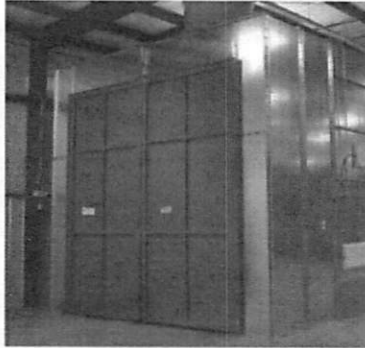
CONTENTS

PAINT BOOTH BASICS 101	4-14
Vison & Scope	
What Does This Mean for the Customer?	
Product Features	
Optional Upgrades	
Custom Options	
Booth Sizes	
Features & Options Matrix	
Lighting	
Owner Manuals	
CROSSDRAFT BOOTHS	15-20
Airflow	
Filtered Swing Product Doors	
Exhaust Chamber	
Booth Drawing - Non-Pressurized	
Pressurized Booth	
Booth Drawing - Pressurized	
SIDE DOWNDRAFT BOOTHS	21-26
Airflow	
Side Exhaust Chamber	
Booth Drawing - Non-Pressurized	
Pressurized Booth	
Booth Drawing - Pressurized	
DOWNDRAFT BOOTHS.....	27-32
Airflow	
Non-Pressurized Booth	
Booth Drawing - Non-Pressurized	
Exhaust Pict	
Pressurized Booth	
Booth Drawing - Pressurized	

CONTROL PANELS.....	33-35
CP-1 Panel	
Velocity Panel	
Auto-Balance System	
AIR MAKE-UP UNITS (AMU).....	36-40
LE/RUPP Tempered AMU	
Pressurized AMU Arrangements	
Pressurized Horizontal Arrangements	
Pressurized Vertical Arrangements	
Non-Pressurized Arrangements	
SAFETY EQUIPMENT	41-43
Manometer	
Air Solenoid Valve	
Limit Switches	

Vision & Scope

- Pre-engineered options
- Diverse customer base
- Code compliant
- ETL approved



NOTES:

What Does This Mean for the Customer?



NOTES:

Product Features

AIRFLOW

- 100 FPM (Crossdraft)
- 40-60 FPM (Side downdraft and downdraft)

CONSTRUCTION

- 18-gauge galvanized steel
- Single-skin horizontal panels

LIGHTING

- 4-tube fluorescent with T8 ballasts
- Color-corrected tubes

DOORS

- Swing doors
- Personnel doors
- Friction-style door latches

SAFETY EQUIPMENT

- Air solenoid valves
- Manometers
- Limit switches

FANS AND MOTORS

- Tube axial exhaust fans
- TEFC 3-phase motors



NOTES:

Optional Upgrades

CONSTRUCTION

- White pre-coated panels
- Dual-skin panels
- Plain or spiral ductwork

FANS AND MOTORS

- Non-tempered intake fans
- AMU (with non-pressurized booth)
- Air proving switch

LIGHTING

- Six-tube fluorescent with T8 ballasts
- LED
- Light reflectors

DOORS AND WINDOWS

- Swing-type product and access doors
- Bifold doors
- Roll-up product doors (steel or fabric)
- Observation windows in doors
- Booth observation wall window kit



NOTES:

Custom Options

SIZE

- Depth, width and height

CONSTRUCTION

- Crane slots or conveyor openings
- Conveyor or monorail supports

CHAMBER AND BRIDGE

- Corner-style exhaust chamber
- External bridge
- Three-stage filtration
- White painted filter racks

LIGHTING

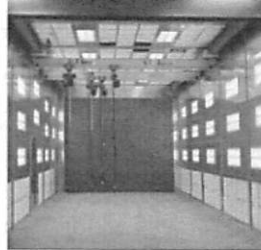
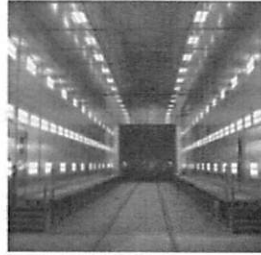
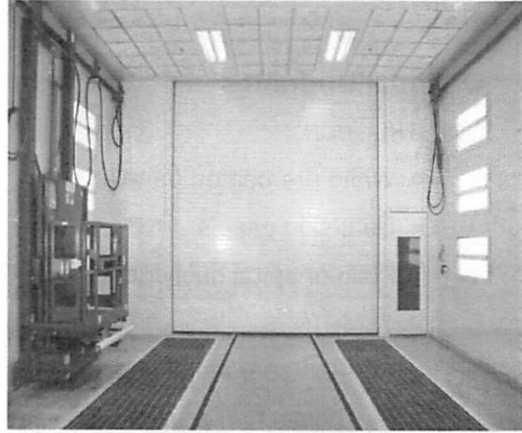
- T5
- Rear access

ACCESSORIES

- Lifts, platforms, stands and railings

OTHER

- Sliding and trifold doors
- Ductwork losses
- Recirculation cure mode
- Seismic construction



NOTES:

Crossdraft Booth Sizes

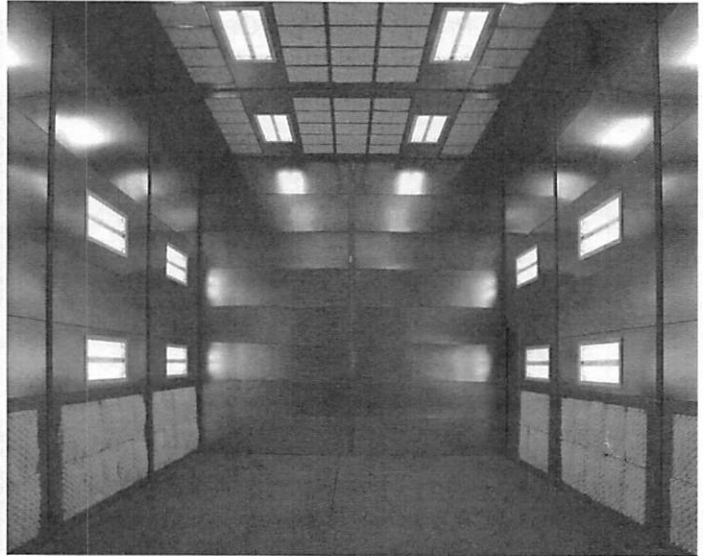
PRE-ENGINEERED OPTIONS	
Width x Height	Depth
14 feet x 14 feet	40-44 feet
16 feet x 14 feet	50-54 feet
16 feet x 16 feet	60-64 feet
18 feet x 16 feet	
18 feet x 18 feet	
20 feet x 16 feet	
20 feet x 18 feet	



NOTES:

Side Downdraft & Downdraft Booth Sizes

PRE-ENGINEERED OPTIONS	
Width x Height	Depth
16 feet x 16 feet	40 feet
18 feet x 16 feet	50 feet
18 feet x 18 feet	60 feet
20 feet x 16 feet	
20 feet x 18 feet	



NOTES:

Features & Options

Standard Equipment = <input checked="" type="checkbox"/>		CDG (Crossdraft Airflow)				DDG (Downdraft Airflow)				SDG (Side-Downdraft Airflow)				
BOOTH FEATURES		Non-Pressurized		Pressurized		Non-Pressurized		Pressurized		Non-Pressurized		Pressurized		
Booth Dimensions														
Pre-Engineered Sizes:														
Available Width	14'	16'	18'	20'	14'	16'	18'	20'	16'	18'	20'	16'	18'	20'
Available Height	14'	16'	18'		14'	16'	18'		16'	18'		16'	18'	
Available Depth	30' 34'	40 44'	50' 54'	60' 64'	30' 34'	40 44'	50' 54'	60' 64'	40'	50'	60'	40'	50'	60'
Airflow Design														
Crossdraft (100 FPM)	<input checked="" type="checkbox"/>		<input checked="" type="checkbox"/>											
Downdraft (50 FPM)					<input checked="" type="checkbox"/>		<input checked="" type="checkbox"/>							
Side Downdraft (50 FPM)									<input checked="" type="checkbox"/>		<input checked="" type="checkbox"/>			
Static Pressure (Exhaust)	1/2"		3/8"		3/4"		3/4"		3/4"		3/4"		3/4"	
Construction														
Booth Material Thickness/Type	18 gauge / Galvanized		18 gauge / Galvanized		18 gauge / Galvanized		18 gauge / Galvanized		18 gauge / Galvanized		18 gauge / Galvanized		18 gauge / Galvanized	
Single Skin Panels	<input checked="" type="checkbox"/>		<input checked="" type="checkbox"/>		<input checked="" type="checkbox"/>		<input checked="" type="checkbox"/>		<input checked="" type="checkbox"/>		<input checked="" type="checkbox"/>		<input checked="" type="checkbox"/>	
Pre-Coat White Panels	Option		Option		Option		Option		Option		Option		Option	
Panel Layout	Horizontal		Horizontal		Horizontal		Horizontal		Horizontal		Horizontal		Horizontal	
Structure Type: (Based on width)	14'W	16'W	18'W	20'W	14'W	16'W	18'W	20'W	16'W	18'W	20'W	16'W	18'W	20'W
W8 x 10 Columns & Beams	<input checked="" type="checkbox"/>	<input checked="" type="checkbox"/>	<input checked="" type="checkbox"/>		<input checked="" type="checkbox"/>	<input checked="" type="checkbox"/>	<input checked="" type="checkbox"/>		<input checked="" type="checkbox"/>	<input checked="" type="checkbox"/>	<input checked="" type="checkbox"/>		<input checked="" type="checkbox"/>	<input checked="" type="checkbox"/>
W8 x 10 Columns / W10 x 12 Beams			<input checked="" type="checkbox"/>				<input checked="" type="checkbox"/>				<input checked="" type="checkbox"/>		<input checked="" type="checkbox"/>	
W8 x 10 Columns / W8 x 15 Beams									<input checked="" type="checkbox"/>	<input checked="" type="checkbox"/>	<input checked="" type="checkbox"/>			
Lighting														
4 Tube/T8 Lighting	<input checked="" type="checkbox"/>		<input checked="" type="checkbox"/>		<input checked="" type="checkbox"/>		<input checked="" type="checkbox"/>		<input checked="" type="checkbox"/>		<input checked="" type="checkbox"/>		<input checked="" type="checkbox"/>	
6 Tube/T8 Lighting	Option		Option		Option		Option		Option		Option		Option	
Reflector Upgrade	Option		Option		Option		Option		Option		Option		Option	
LED Upgrade	Option		Option		Option		Option		Option		Option		Option	
Doors														
Type (Standard)	Filtered Swing		Solid Swing		Solid Swing		Solid Swing		Solid Swing		Solid Swing		Solid Swing	
Bi-Fold	Option (Filtered)		Option (Solid)		Option (Solid)		Option (Solid)		Option (Solid)		Option (Solid)		Option (Solid)	
Roll-up	Option Only on Exit Door if Drive-Thru Config Selected		Option		Option		Option		Option		Option		Option	
Observation Windows on Product Doors (1 per Door Slab)	Option		Option		Option		Option		Option		Option		Option	
Add Product Exit Door (Drive-Thru Configuration)	Option (Solid Door on Exit)		Option		Option		Option		Option		Option		Option	
Personnel Door w/ 18' x 24' Observation Window	30'-34' Depth: 1 Door 40'-64' Depth: 2 Doors		30'-34' Depth: 1 Door 40'-64' Depth: 2 Doors		2 Doors		2 Doors		2 Doors		2 Doors		2 Doors	
Additional Personnel Door Kit (Selectable Quantity)	Option		Option		Option		Option		Option		Option		Option	
Limit Switches (Man Doors & Product Doors)	Option		<input checked="" type="checkbox"/>		Option		<input checked="" type="checkbox"/>		Option		<input checked="" type="checkbox"/>		<input checked="" type="checkbox"/>	

NOTES:

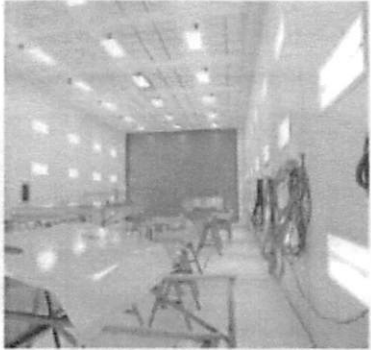
Features & Options

Pressurizing Selectables						
Intake Fan		*Custom				
Air Make-Up Unit		✓		✓		✓
Direct Fire Air Make-up Unit Selectables						
Horizontal Outdoor Down Discharge	✓	✓	✓	✓	✓	✓
Horizontal Indoor End Discharge		✓		✓		✓
Vertical Outdoor Side Discharge	✓	✓	✓		✓	
Vertical Outdoor Top Discharge		✓		✓		✓
Vertical Indoor Side Discharge		✓				
Vertical Indoor Top Discharge		✓				
Direct Fire Fuel Type	Propane or Natural Gas	Propane or Natural Gas	Propane or Natural Gas	Propane or Natural Gas	Propane or Natural Gas	Propane or Natural Gas
Selectable Gas Pressure	7-13" 14-28" 1-5#	7-13" 14-28" 1-5#	7-13" 14-28" 1-5#	7-13" 14-28" 1-5#	7-13" 14-28" 1-5#	7-13" 14-28" 1-5#
Canadian Requirements	Option	Option	Option	Option	Option	Option
AMU Intake/Discharge Duct Kit (Optional Roof/Wall Flange)	Option	Option	Option	Option	Option	Option
Control Panel						
Basic (CP-1)	Option		Option		Option	
Deluxe		*Custom				
Velocity (Allen Bradley PLC/HMI)		✓		✓		✓
Cure Mode (Force Dry 140 degree)		✓		✓		✓
Manual VFD	Option		Option		Option	
Consta-Flow	Option		Option		Option	
Auto-Balance		✓		✓		✓
Economy Mode	Custom	Option	Custom	Option	Custom	Option
* CDG Booths can be pressurized via Intake Fan (Custom Option) or AMU. In a fan pressurized booth the control panel will be an electro-mechanical deluxe panel with auto-balance and no cure. If pressurized by an AMU the control panel will be a Velocity PLC based panel with auto-balance and cure standard.						
Components						
Solenoid Air Valve (1/2" Standard or Optional Upgrade to 3/4")	✓	✓	✓	✓	✓	✓
Observation Window Kits (Field Install)	Option	Option	Option	Option	Option	Option
Explosion Proof Motor Upgrade	Option	Option	Option	Option	Option	Option
Air Proving Switches (# provided coincides with # of exhaust fans)	Option	Option	Option	Option	Option	Option
Exhaust Ductwork						
Exhaust Ductwork	Configurable Option	Configurable Option	Configurable Option	Configurable Option	Configurable Option	Configurable Option
Warranty						
1 yr. Parts Warranty	✓	✓	✓	✓	✓	✓

NOTES:

Lighting

- Class I, Division 2 inside-access light fixtures
- Strategically placed
- Precise, complete lighting for minimal shadows



NOTES:

Owner Manuals

- Manuals come only for standard jobs
- Every standard job comes with 3 manuals
 - Installation
 - Service and operations
 - Control panel
- Covers every type of airflow within the LE line

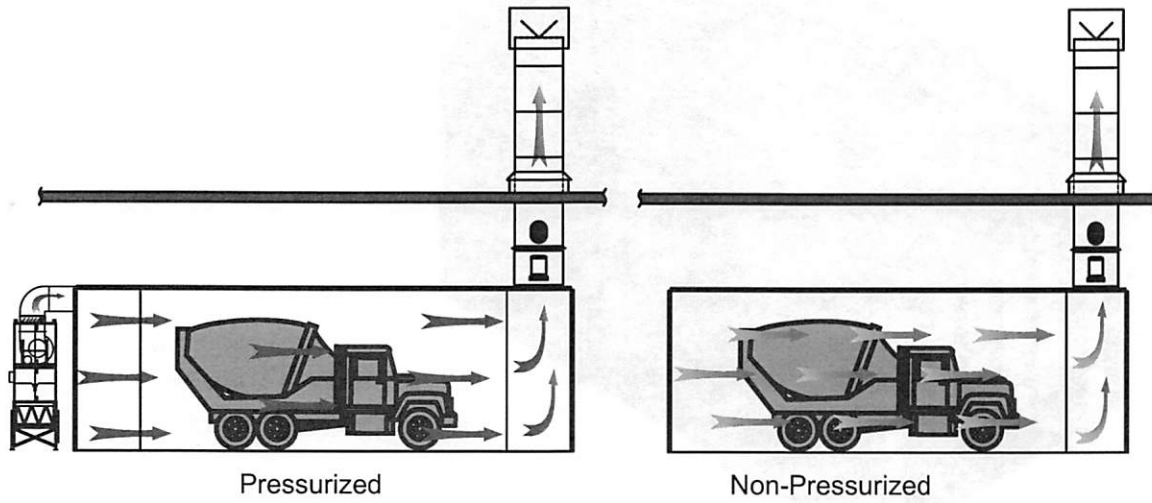


NOTES:

CROSSDRAFT BOOTHS

Crossdraft Airflow

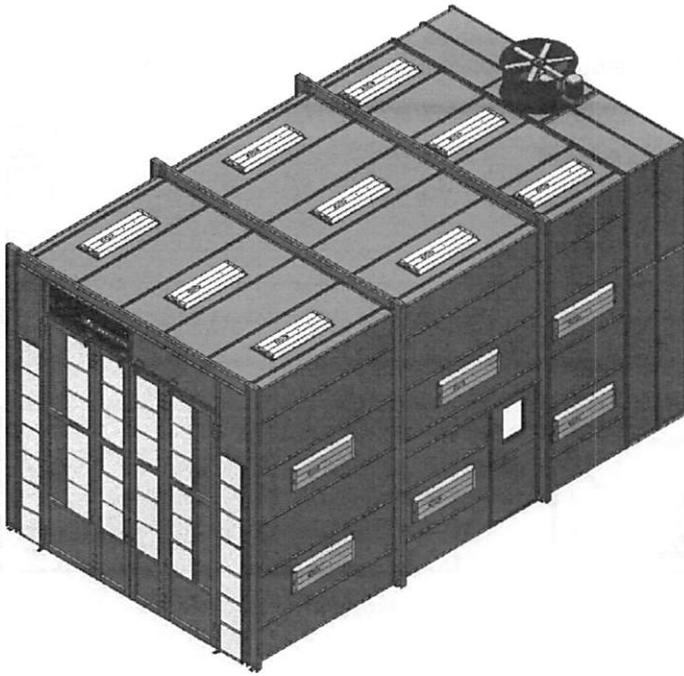
Most cost-effective and most popular for industrial applications



NOTES:

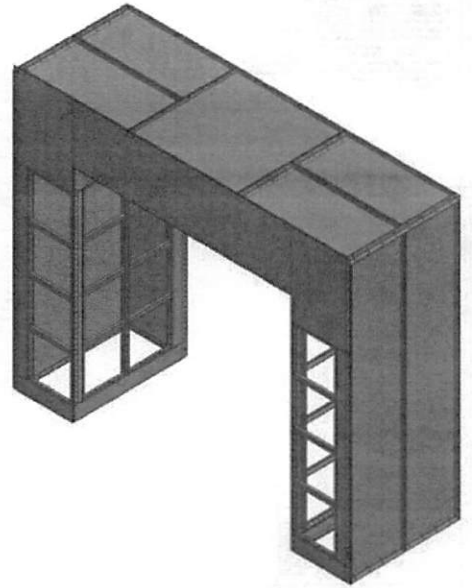
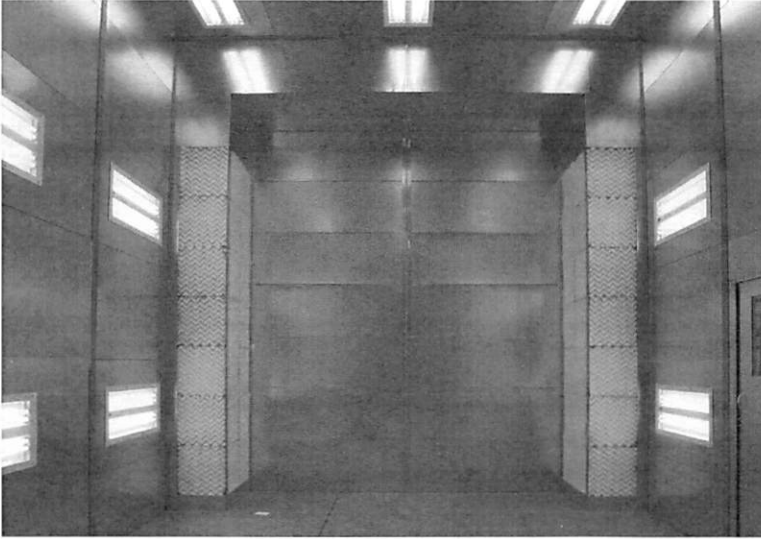
Filtered Swing Product Doors

Air is introduced through filtered swing product doors



NOTES:

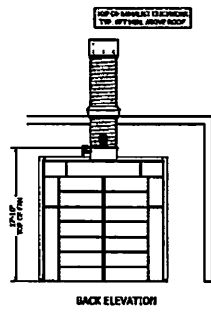
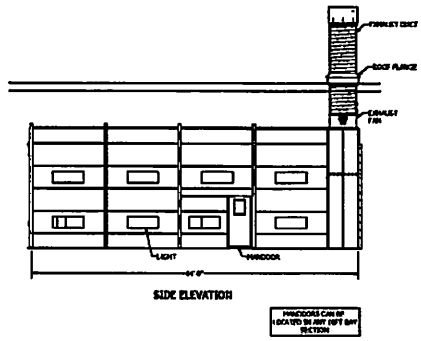
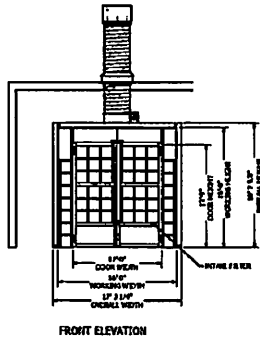
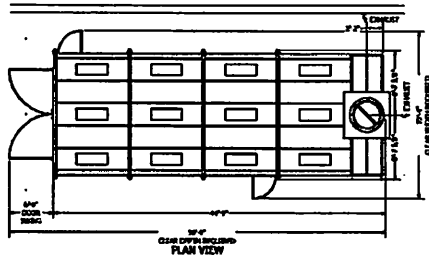
Exhaust Chamber



NOTES:

Non-Pressurized Crossdraft Booth

NOTE:
 1. BOOTH IS FABRICATED FROM 80 GALS. GALV. SHEET METAL (20 GA.)
 2. BOOTH SUPPORT STRUCTURE IS FABRICATED FROM 1 1/2" X 4" X 1/4" GALV. STEEL
 3. BOOTH CURTAIN STRUCTURE IS FABRICATED FROM 1 1/2" X 4" X 1/4" GALV. STEEL
 4. CURTAIN SUPPORT RODS SUPPLIED BY OTHER CONTRACTOR
 5. HOOD STRUCTURE IS 18" X 18" X 1/4" GALV. STEEL
 6. HOOD SUPPORT RODS SUPPLIED BY OTHER CONTRACTOR
 7. HOOD CURTAIN STRUCTURE IS 18" X 18" X 1/4" GALV. STEEL
 8. HOOD CURTAIN SUPPLIED BY OTHER CONTRACTOR
 9. HOOD CURTAIN STRUCTURE IS 18" X 18" X 1/4" GALV. STEEL
 10. HOOD CURTAIN SUPPLIED BY OTHER CONTRACTOR



BOOTH EQUIPMENT SPECIFICATIONS	
ITEM #	DESCRIPTION
1	HOOD CURTAIN
2	HOOD CURTAIN STRUCTURE
3	HOOD CURTAIN SUPPORT RODS
4	HOOD CURTAIN SLATS
5	HOOD CURTAIN SLAT SUPPORTS
6	HOOD CURTAIN SLAT BRACKETS
7	HOOD CURTAIN SLAT HOOKS
8	HOOD CURTAIN SLAT RINGS
9	HOOD CURTAIN SLAT SPACERS
10	HOOD CURTAIN SLAT STOPPERS
11	HOOD CURTAIN SLAT END CAPS
12	HOOD CURTAIN SLAT CORNERS
13	HOOD CURTAIN SLAT JOISTS
14	HOOD CURTAIN SLAT BRACES
15	HOOD CURTAIN SLAT GUSSETS
16	HOOD CURTAIN SLAT WELDS
17	HOOD CURTAIN SLAT PAINT
18	HOOD CURTAIN SLAT CLEANING
19	HOOD CURTAIN SLAT REPAIRS
20	HOOD CURTAIN SLAT REPLACEMENTS

GLOBAL FINISHING SOLUTIONS
 1000 W. MARKET ST. SUITE 100
 COVINGTON, LA 70020
 (504) 885-8728
www.globalfinishing.com

REVISIONS:

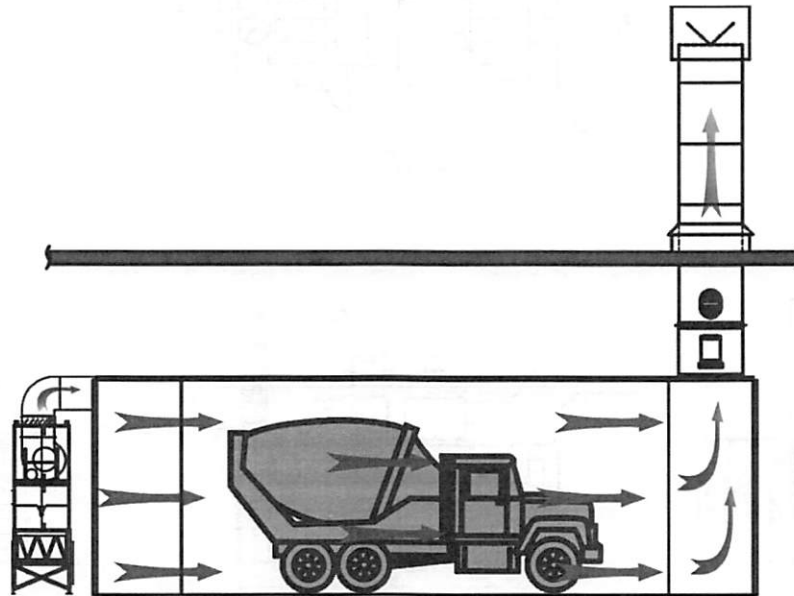
NO.	DATE	DESCRIPTION
1	07/07/2017	CONCEPT DRAWING

1000 W. MARKET ST. SUITE 100
 COVINGTON, LA 70020
 (504) 885-8728
www.globalfinishing.com

NOTES:

Pressurized Crossdraft Booth

- Cleaner environment
- More consistent paint jobs with booth balancing
- Better temperature control with heated Air Make-Up Unit (AMU)
- Chamber size designed for optimal airflow and to maximize filter life

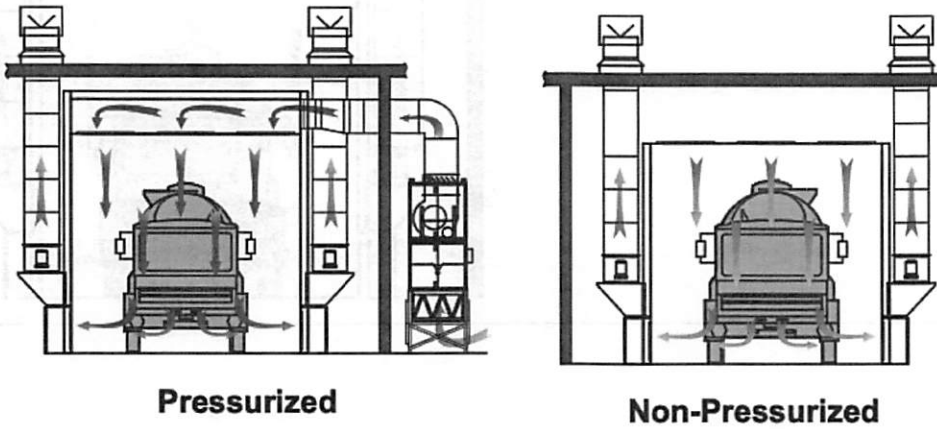


NOTES:

SIDE DOWNDRAFT BOOTHS

Side Downdraft Airflow

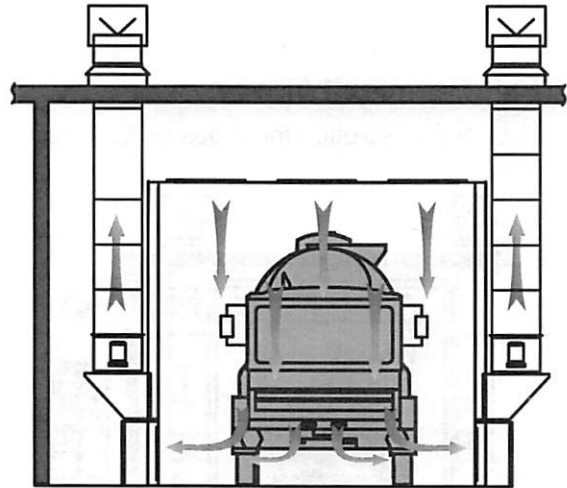
Economical solution for shops without a pit



NOTES

Non-Pressurized Side Downdraft Booth

- Cleaner environment for a quality paint job
- Less expensive than pressurized booths



NOTES

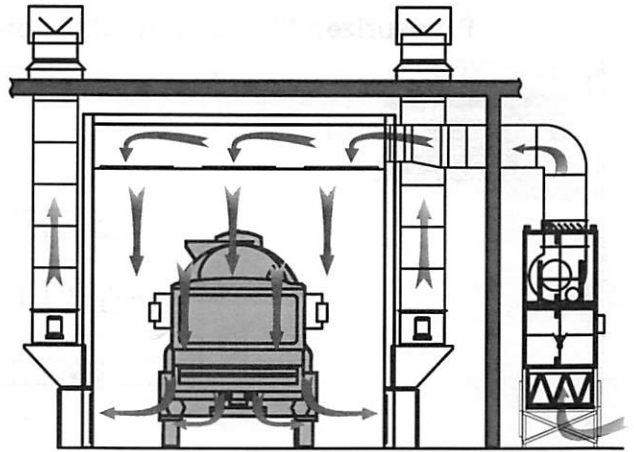
Side Exhaust Chamber



NOTES

Pressurized Side Downdraft Booth

- Cleaner environment
- More consistent paint jobs with booth balancing
- Better temperature control with heated Air Make-Up Unit (AMU)

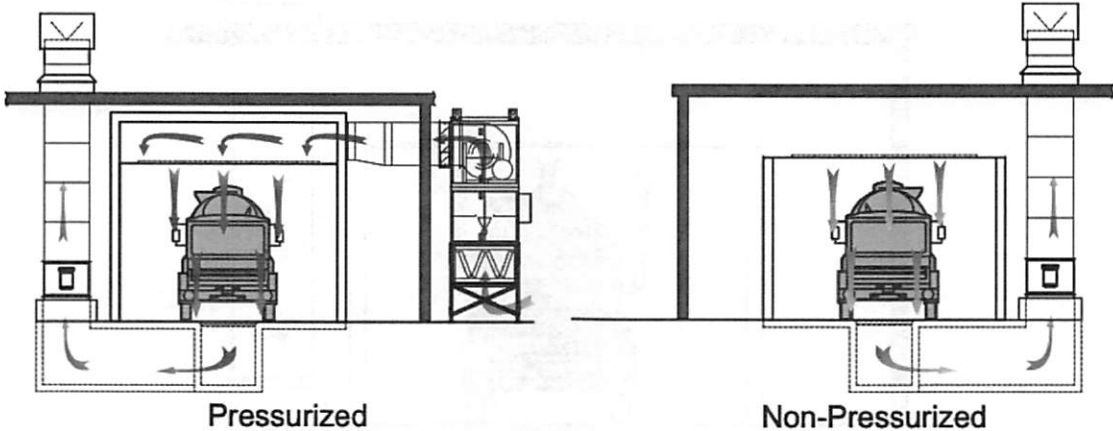


NOTES

DOWNDRAFT BOOTHS

Downdraft Airflow

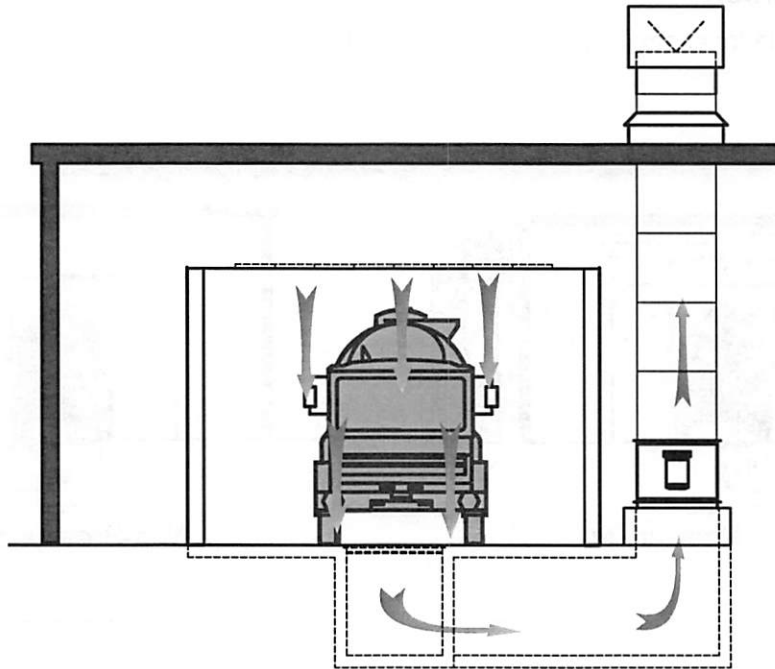
Best airflow style for controlling overspray and contamination



NOTES

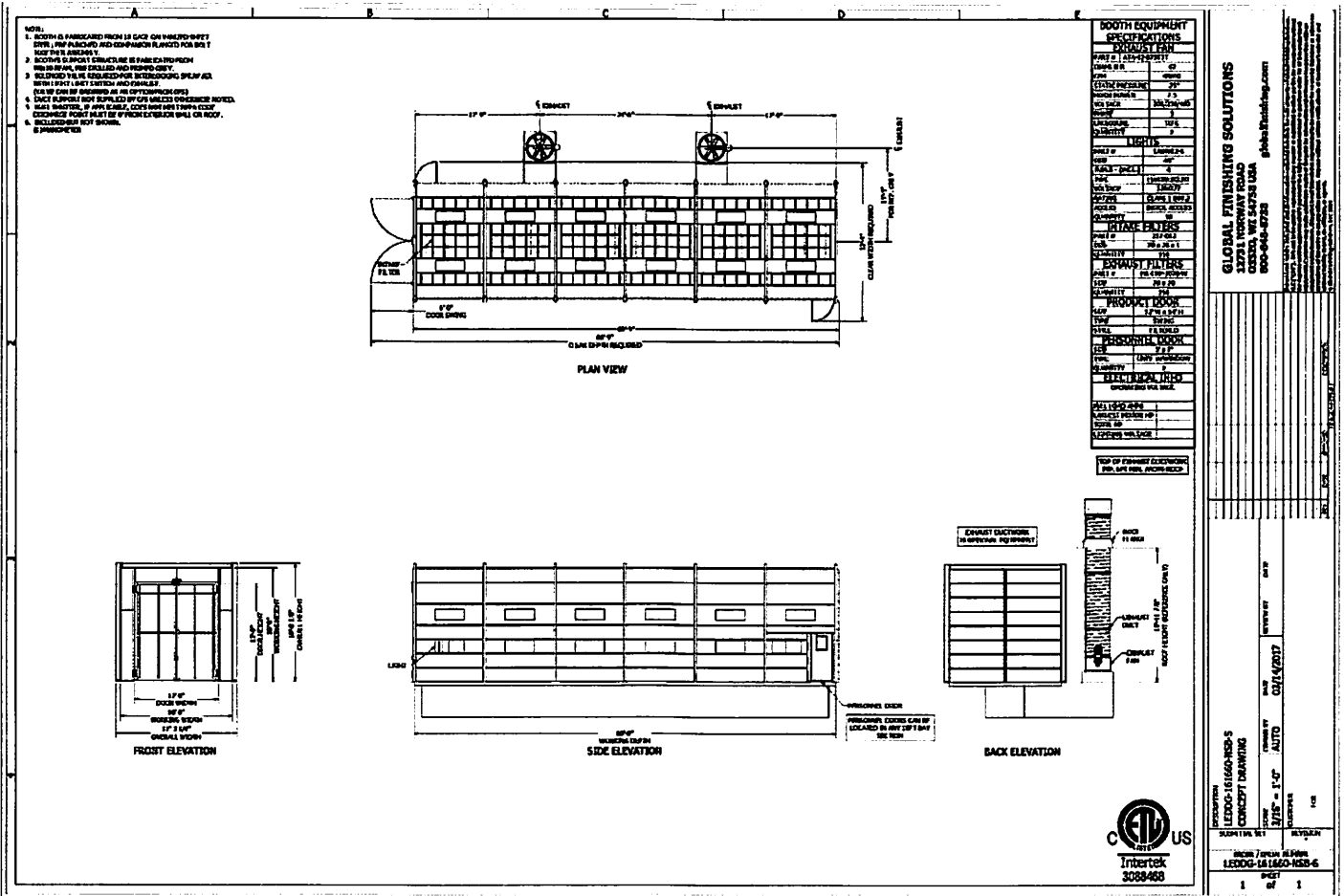
Non-Pressurized Downdraft Booth

- Cleaner environment for a quality paint job
- Less expensive than pressurized booths



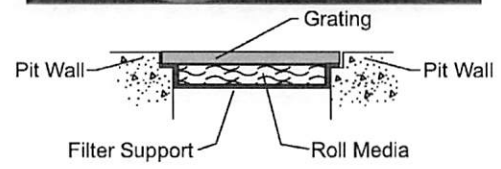
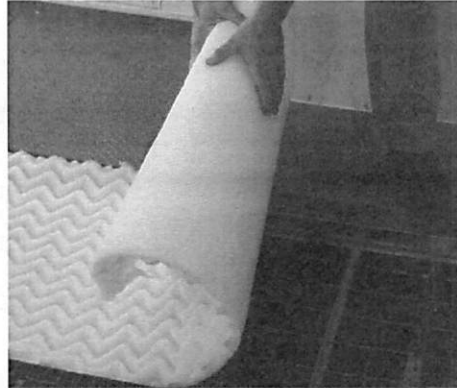
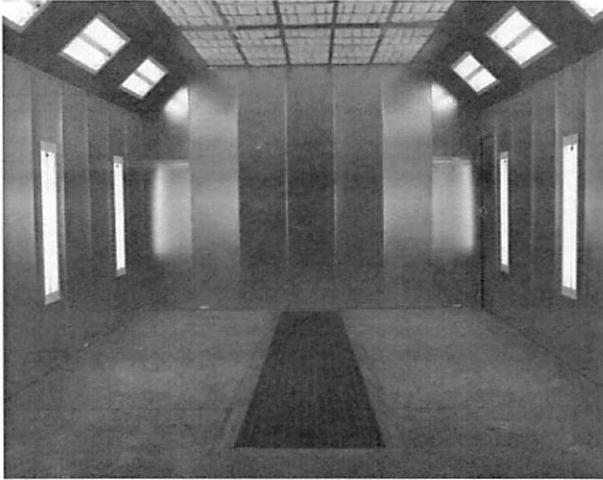
NOTES.

Non-Pressurized Downdraft Booth



NOTES

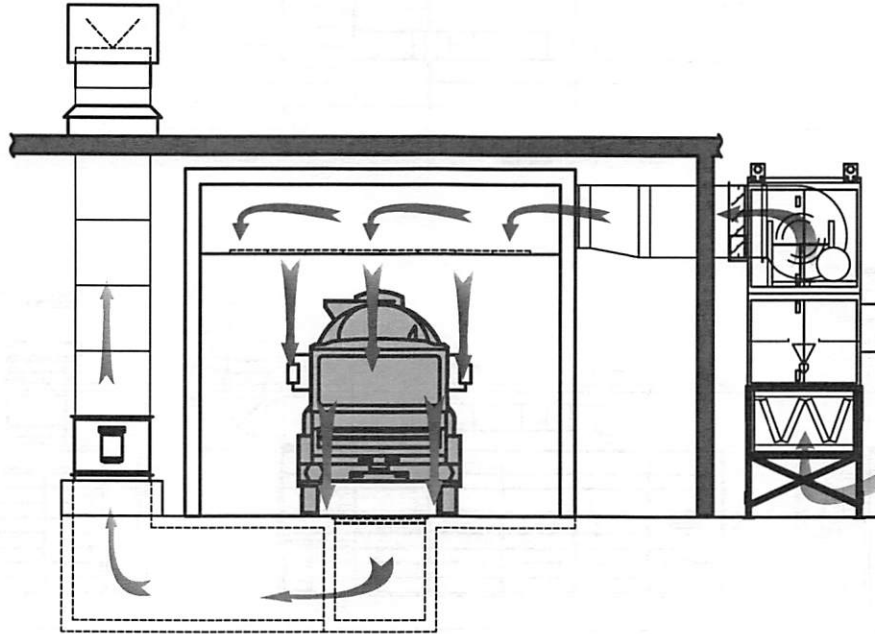
Exhaust Pit



NOTES

Pressurized Downdraft Booth

- Cleaner environment
- More consistent paint jobs with booth balancing
- Better temperature control with heated Air Make-Up Unit (AMU)



NOTES

Pressurized Downdraft Booth

NOTES:

1. BOOTH IS FABRICATED FROM 16 GAUGE GALVALUME SHEET METAL PER REQUIRED AND COMPROMISE FINISHED FOR 50% TYPICAL FINISH.
2. BOOTH IS DESIGNED TO OPERATE AS A PRESSURIZED ROOM WITH SEALS AND GASKETS AND INSULATION.
3. BOOTH IS TO BE MAINTAINED BUILDING CODES AND AIR FLOW REQUIREMENTS.
4. ALL AIR AND EXHAUST DUCTWORK IS OPTIONAL EQUIPMENT.
5. ALL DIMENSIONS ARE IN FEET AND INCHES UNLESS NOTED OTHERWISE.
6. ALL DIMENSIONS ARE TO FACE UNLESS NOTED OTHERWISE.
7. ALL DIMENSIONS ARE TO FACE UNLESS NOTED OTHERWISE.
8. ALL DIMENSIONS ARE TO FACE UNLESS NOTED OTHERWISE.
9. ALL DIMENSIONS ARE TO FACE UNLESS NOTED OTHERWISE.
10. ALL DIMENSIONS ARE TO FACE UNLESS NOTED OTHERWISE.

PLAN VIEW

AIRU SPECIFICATIONS

ITEM	DESCRIPTION	QUANTITY
1	16 GAUGE GALVALUME SHEET METAL	1000
2	16 GAUGE GALVALUME SHEET METAL	1000
3	16 GAUGE GALVALUME SHEET METAL	1000
4	16 GAUGE GALVALUME SHEET METAL	1000
5	16 GAUGE GALVALUME SHEET METAL	1000
6	16 GAUGE GALVALUME SHEET METAL	1000
7	16 GAUGE GALVALUME SHEET METAL	1000
8	16 GAUGE GALVALUME SHEET METAL	1000
9	16 GAUGE GALVALUME SHEET METAL	1000
10	16 GAUGE GALVALUME SHEET METAL	1000

BOOTH EQUIPMENT SPECIFICATIONS

ITEM	DESCRIPTION	QUANTITY
1	16 GAUGE GALVALUME SHEET METAL	1000
2	16 GAUGE GALVALUME SHEET METAL	1000
3	16 GAUGE GALVALUME SHEET METAL	1000
4	16 GAUGE GALVALUME SHEET METAL	1000
5	16 GAUGE GALVALUME SHEET METAL	1000
6	16 GAUGE GALVALUME SHEET METAL	1000
7	16 GAUGE GALVALUME SHEET METAL	1000
8	16 GAUGE GALVALUME SHEET METAL	1000
9	16 GAUGE GALVALUME SHEET METAL	1000
10	16 GAUGE GALVALUME SHEET METAL	1000

FRONT ELEVATION

SIDE ELEVATION

BACK ELEVATION

NOTES:

1. ALL AIRU AND EXHAUST DUCTWORK IS OPTIONAL EQUIPMENT.
2. SET 1 IS REQUIRED BETWEEN THE DOWN DRAFT AND THE PRODUCT AREA.
3. SET 2 IS REQUIRED BETWEEN THE DOWN DRAFT AND THE PRODUCT AREA.

GLOBAL FINISHING SOLUTIONS

13221 N. WISCONSIN ROAD
 CEDAR RAPIDS, IA 52408 USA
 800-544-6738

DATE: 03/12/2017
 DRAWN BY: [Name]
 CHECKED BY: [Name]
 PROJECT: 161660-PSB-S-115

1 of 1

NOTES

CONTROL PANELS

CP-1 Control Panel

- Single-point power connection for easy wiring
- UL listed
- Options include manual VFD and Consta-Flow



NOTES

Velocity Control Panel

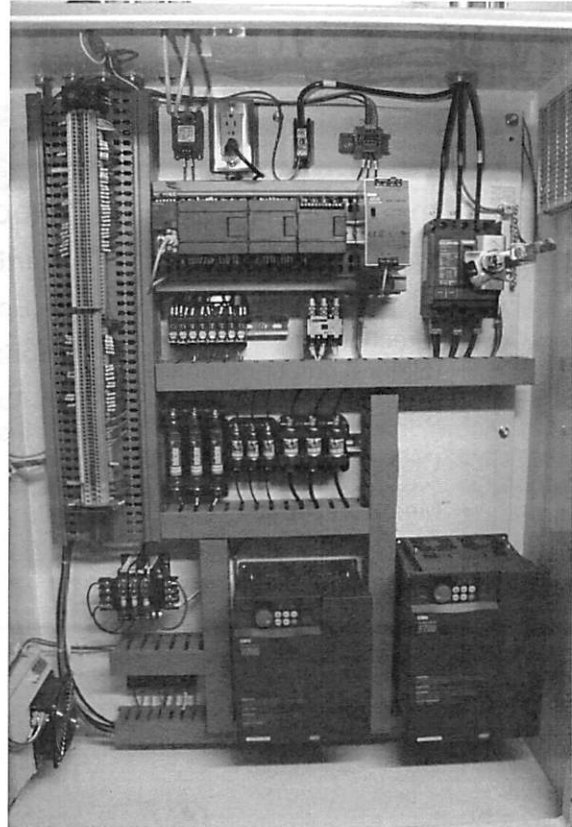
- Color touch screen
- Spray, flash and cure modes
- Programmable time and temperature
- Alarms and ethernet communication to AMU for enhanced troubleshooting
- Optional economy mode



NOTES

Auto-Balance System

- Automatic adjusting of fan to changing conditions via VFD, pressure gauge and probes
- Booth remains balanced even as filters load
- Increased useful filter life
- Consistent airflow through the booth
- Controlled booth pressure
- Cleaner paint job and spray area
- More consistent cure



NOTES

AIR MAKE-UP UNITS (AMU)

LE / RUPP Tempered AMUs

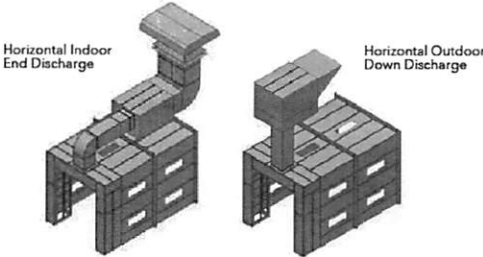
Standard Features (For pressurized booths)	Additional Features (Based on configuration)	
<ul style="list-style-type: none"> • 100-degree temperature rise • VAV/VFD cure control package • Direct-fired (Natural gas or propane) • Selectable gas pressure • Clogged filter switch • Meets NFPA 86 requirements • ETL listed 	<p>INDOOR</p> <p>Vertical unit:</p> <ul style="list-style-type: none"> • Enclosed vertical stand <p>Horizontal Unit:</p> <ul style="list-style-type: none"> • Above booth non-integrated stand 	<p>OUTDOOR</p> <p>Vertical unit:</p> <ul style="list-style-type: none"> • Vertical stand <p>Horizontal unit:</p> <ul style="list-style-type: none"> • 24-inch curb (flat or pitched) • Hood with 2-inch cleanable filter with bird screen

NOTES

Pressurized AMU Arrangements

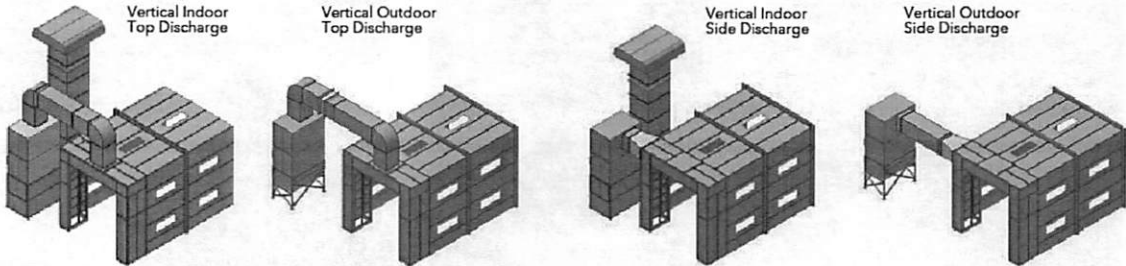
Horizontal

- Roof-mounted, booth-mounted



Vertical

- With stand, enclosed

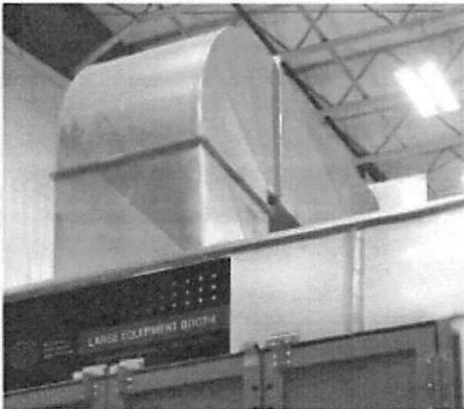
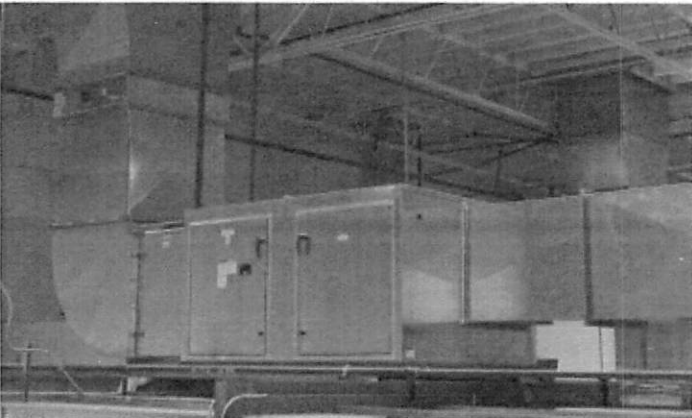


NOTES

Pressurized Horizontal AMU Arrangements



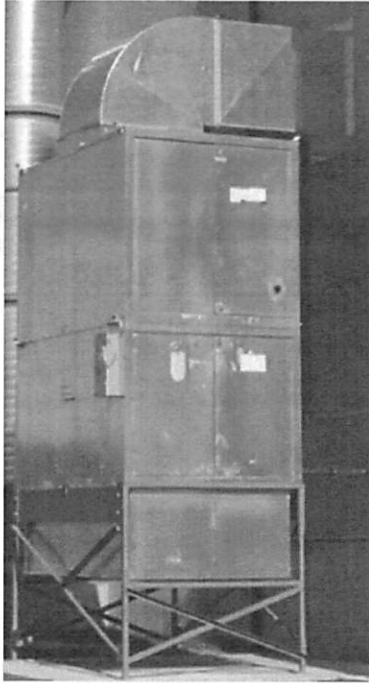
Horizontal outdoor down discharge (Roof-mounted)



Horizontal indoor down discharge (Booth-mounted)

NOTES

Pressurized Vertical AMU Arrangements



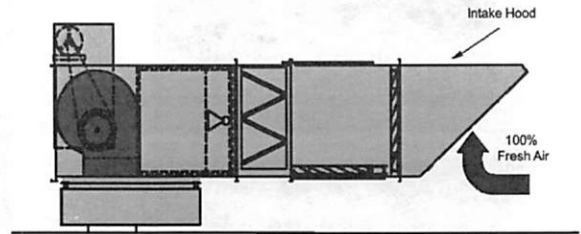
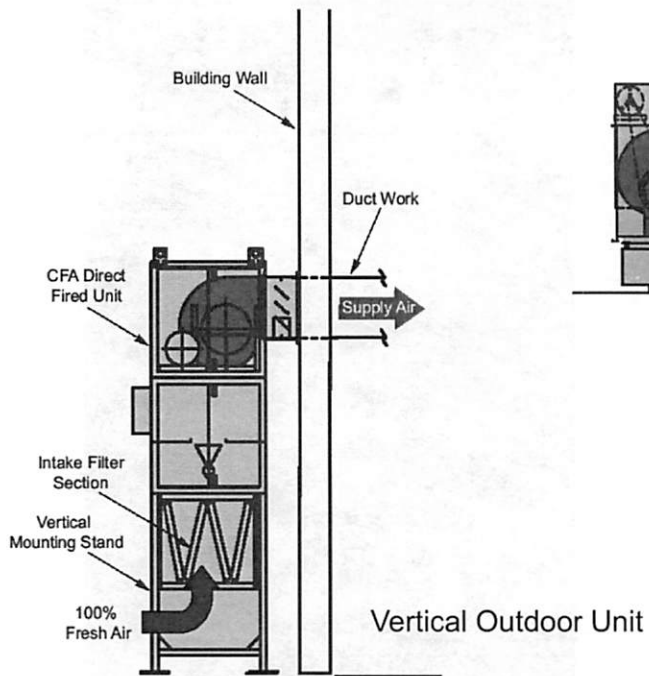
Vertical outdoor side discharge



Vertical indoor side discharge

NOTES

Non-Pressurized AMU Arrangements



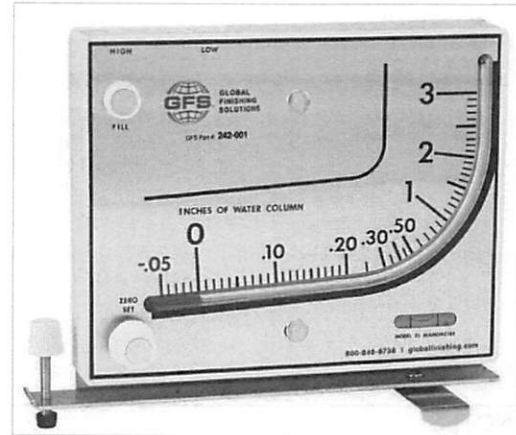
Horizontal Outdoor Unit
Roof Mounted

NOTES

SAFETY EQUIPMENT

Manometer

- Included with all booths
- Monitors filter loading



NOTES

Air Solenoid Valve

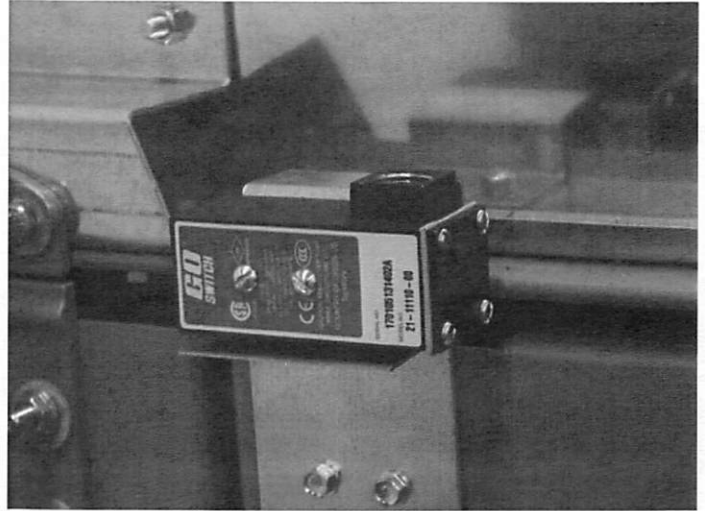
- Prevents spraying in the booth when fans are off or access door is open
- Required on all booths, per code
- 1/2 inch standard or 3/4 inch option



NOTES

Limit Switches

- Shuts down painting when booth doors are open for user safety
- Standard on all pressurized booths
- Optional on non-pressurized booths



NOTES