



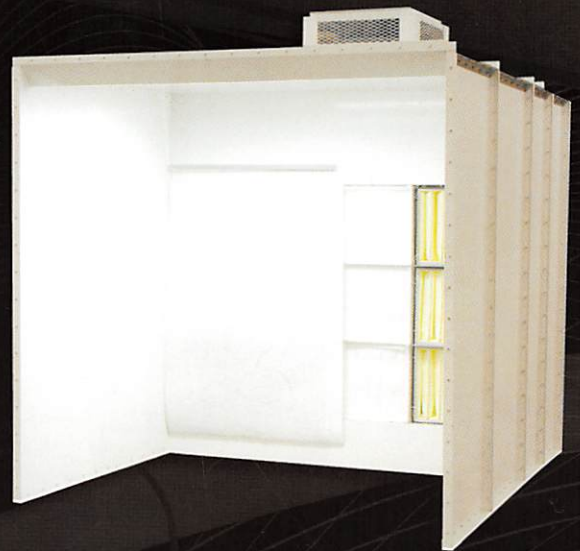
GLOBAL
FINISHING
SOLUTIONS

Dust Collection

Sanding & Grinding Booths

Blast Booths

Dust Collectors



APPLICATIONS: • Metal • Wood • Fiberglass • Laminates

Sanding Booths

BATCH MODELS - *Not Recommended for Grinding*



Optional white pre-coated panels

BOOTH FEATURES

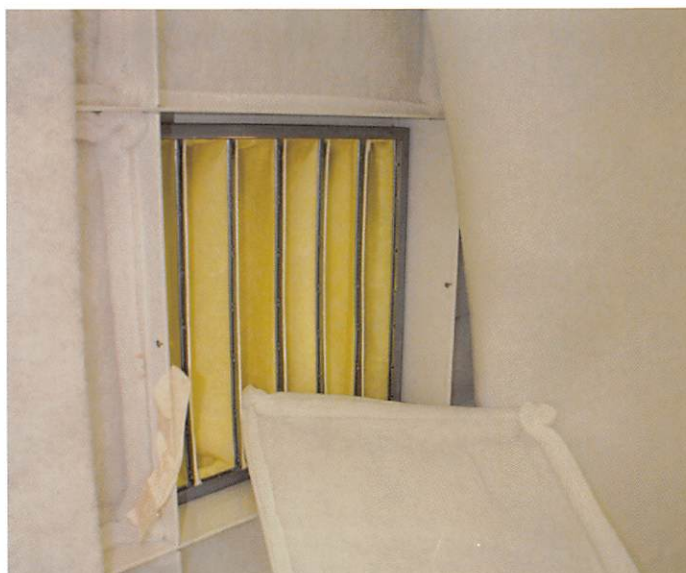
- Galvanized steel panels
- Heavy-duty, high-capacity, low noise plug fan (rated at 1.5" SP)
- Smooth interior for easy maintenance
- 3-stage filtration system that includes a full set of filters, grids and manometer for filter maintenance
- Energy-efficient, inside-access light fixture(s)
- Recirculates clean air
- Assembly hardware and drawings
- Air make-up not required
- Designed to comply with all federal, OSHA and NFPA regulations

OPTIONS

- White pre-coated panels
- Classic control panel

3-STAGE FILTRATION SYSTEM

Incorporated into GFS Batch Sanding Booths, the 3-Stage Filtration System is highly effective at capturing high volumes of dust (with up to 99.9% filter efficiency at 5 micron).



Sanding Booths

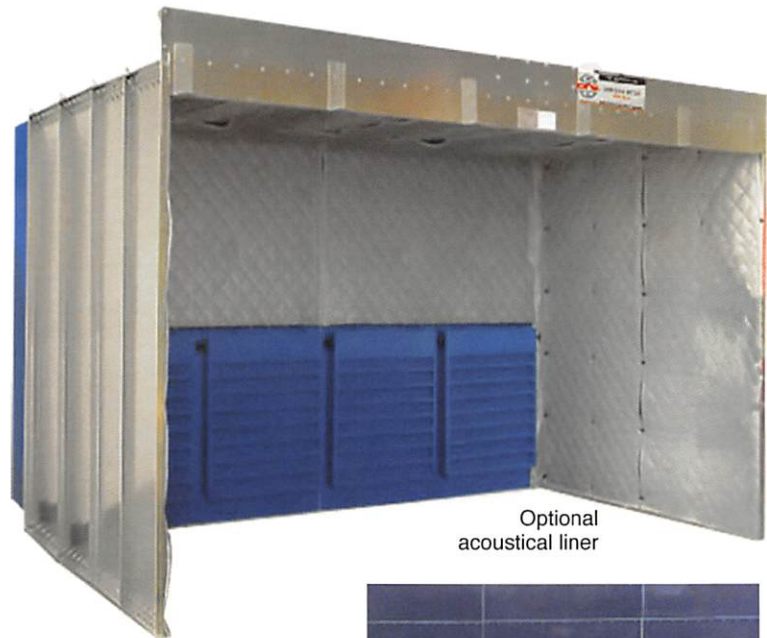
| Standard Model No. | Inside Dimensions | | | Outside Dimensions | | | Fan Clear Height | Light Qty | Min. CFM @ 1.5" s.p. | Wheel Diameter | Motor HP |
|--------------------|-------------------|--------|-------|--------------------|---------|--------|------------------|-----------|----------------------|----------------|----------|
| | Width | Height | Depth | Width | Height | Depth | | | | | |
| 8 Ft. Wide Booths | | | | | | | | | | | |
| DNRG-080806 | 8' | 8' | 6' | 8'-4" | 8'-2" | 10'-2" | 12'-2" | 1 | 6400 | 25" | 3 |
| DNRG-080809 | 8' | 8' | 9' | 8'-4" | 8'-2" | 13'-2" | 12'-2" | 1 | 6400 | 25" | 3 |
| DNRG-080812 | 8' | 8' | 12' | 8'-4" | 8'-2" | 16'-2" | 12'-2" | 2 | 6400 | 25" | 3 |
| DNRG-081006 | 8' | 10' | 6' | 8'-4" | 10'-2" | 10'-2" | 14'-2" | 1 | 8000 | 25" | 3 |
| DNRG-081009 | 8' | 10' | 9' | 8'-4" | 10'-2" | 13'-2" | 14'-2" | 1 | 8000 | 25" | 3 |
| DNRG-081012 | 8' | 10' | 12' | 8'-4" | 10'-2" | 16'-2" | 14'-2" | 2 | 8000 | 25" | 3 |
| 10 Ft. Wide Booths | | | | | | | | | | | |
| DNRG-100806 | 10' | 8' | 6' | 10'-4" | 8'-2" | 10'-2" | 12'-2" | 2 | 8000 | 25" | 3 |
| DNRG-100809 | 10' | 8' | 9' | 10'-4" | 8'-2" | 13'-2" | 12'-2" | 2 | 8000 | 25" | 3 |
| DNRG-100812 | 10' | 8' | 12' | 10'-4" | 8'-2" | 16'-2" | 12'-2" | 4 | 8000 | 25" | 3 |
| DNRG-101006 | 10' | 10' | 6' | 10'-4" | 10'-2" | 10'-2" | 14'-11" | 2 | 10000 | 28" | 5 |
| DNRG-101009 | 10' | 10' | 9' | 10'-4" | 10'-2" | 13'-2" | 14'-11" | 2 | 10000 | 28" | 5 |
| DNRG-101012 | 10' | 10' | 12' | 10'-4" | 10'-2" | 16'-2" | 14'-11" | 4 | 10000 | 28" | 5 |
| 12 Ft. Wide Booths | | | | | | | | | | | |
| DNRG-120806 | 12' | 8' | 6' | 12'-4" | 8'-10" | 10'-2" | 12'-11" | 2 | 9600 | 28" | 3 |
| DNRG-120809 | 12' | 8' | 9' | 12'-4" | 8'-10" | 13'-2" | 12'-11" | 2 | 9600 | 28" | 3 |
| DNRG-120812 | 12' | 8' | 12' | 12'-4" | 8'-10" | 16'-2" | 12'-11" | 4 | 9600 | 28" | 3 |
| DNRG-121006 | 12' | 10' | 6' | 12'-4" | 10'-10" | 10'-2" | 14'-11" | 2 | 12000 | 28" | 5 |
| DNRG-121009 | 12' | 10' | 9' | 12'-4" | 10'-10" | 13'-2" | 14'-11" | 2 | 12000 | 28" | 5 |
| DNRG-121012 | 12' | 10' | 12' | 12'-4" | 10'-10" | 16'-2" | 14'-11" | 4 | 12000 | 28" | 5 |
| 14 Ft. Wide Booths | | | | | | | | | | | |
| DNRG-140806 | 14' | 8' | 6' | 14'-4" | 8'-10" | 10'-2" | 12'-11" | 2 | 11200 | 28" | 5 |
| DNRG-140809 | 14' | 8' | 9' | 14'-4" | 8'-10" | 13'-2" | 12'-11" | 2 | 11200 | 28" | 5 |
| DNRG-140812 | 14' | 8' | 12' | 14'-4" | 8'-10" | 16'-2" | 12'-11" | 4 | 11200 | 28" | 5 |
| DNRG-141006 | 14' | 10' | 6' | 14'-4" | 10'-10" | 10'-2" | 15'-4" | 2 | 14000 | 35" | 5 |
| DNRG-141009 | 14' | 10' | 9' | 14'-4" | 10'-10" | 13'-2" | 15'-4" | 2 | 14000 | 35" | 5 |
| DNRG-141012 | 14' | 10' | 12' | 14'-4" | 10'-10" | 16'-2" | 15'-4" | 4 | 14000 | 35" | 5 |
| 16 Ft. Wide Booths | | | | | | | | | | | |
| DNRG-160806 | 16' | 8' | 6' | 16'-4" | 8'-10" | 10'-2" | 12'-11" | 2 | 12800 | 28" | 5 |
| DNRG-160809 | 16' | 8' | 9' | 16'-4" | 8'-10" | 13'-2" | 12'-11" | 2 | 12800 | 28" | 5 |
| DNRG-160812 | 16' | 8' | 12' | 16'-4" | 8'-10" | 16'-2" | 12'-11" | 4 | 12800 | 28" | 5 |
| DNRG-161006 | 16' | 10' | 6' | 16'-4" | 10'-10" | 10'-2" | 15'-4" | 2 | 16000 | 35" | 7.5 |
| DNRG-161009 | 16' | 10' | 9' | 16'-4" | 10'-10" | 13'-2" | 15'-4" | 2 | 16000 | 35" | 7.5 |
| DNRG-161012 | 16' | 10' | 12' | 16'-4" | 10'-10" | 16'-2" | 15'-4" | 4 | 16000 | 35" | 7.5 |
| 18 Ft. Wide Booths | | | | | | | | | | | |
| DNRG-180806 | 18' | 8' | 6' | 18'-4" | 8'-10" | 10'-2" | 13'-4" | 3 | 14400 | 35" | 7.5 |
| DNRG-180809 | 18' | 8' | 9' | 18'-4" | 8'-10" | 13'-2" | 13'-4" | 3 | 14400 | 35" | 7.5 |
| DNRG-180812 | 18' | 8' | 12' | 18'-4" | 8'-10" | 16'-2" | 13'-4" | 6 | 14400 | 35" | 7.5 |
| DNRG-181006 | 18' | 10' | 6' | 18'-4" | 10'-10" | 10'-2" | 15'-4" | 3 | 18000 | 35" | 7.5 |
| DNRG-181009 | 18' | 10' | 9' | 18'-4" | 10'-10" | 13'-2" | 15'-4" | 3 | 18000 | 35" | 7.5 |
| DNRG-181012 | 18' | 10' | 12' | 18'-4" | 10'-10" | 16'-2" | 15'-4" | 6 | 18000 | 35" | 7.5 |
| 20 Ft. Wide Booths | | | | | | | | | | | |
| DNRG-200806 | 20' | 8' | 6' | 20'-4" | 8'-10" | 10'-2" | 13'-4" | 4 | 16000 | 35" | 7.5 |
| DNRG-200809 | 20' | 8' | 9' | 20'-4" | 8'-10" | 13'-2" | 13'-4" | 4 | 16000 | 35" | 7.5 |
| DNRG-200812 | 20' | 8' | 12' | 20'-4" | 8'-10" | 16'-2" | 13'-4" | 8 | 16000 | 35" | 7.5 |
| DNRG-201006 | 20' | 10' | 6' | 20'-4" | 10'-10" | 10'-2" | 15'-4" | 4 | 20000 | 35" | 7.5 |
| DNRG-201009 | 20' | 10' | 9' | 20'-4" | 10'-10" | 13'-2" | 15'-4" | 4 | 20000 | 35" | 7.5 |
| DNRG-201012 | 20' | 10' | 12' | 20'-4" | 10'-10" | 16'-2" | 15'-4" | 8 | 20000 | 35" | 7.5 |

Sanding & Grinding Booths

HIGH PRODUCTION MODELS

BOOTH FEATURES

- 18-gauge galvanized steel panels, precision-flanged and pre-punched for easy assembly
- Heavy-duty, high-capacity plug fan
- Smooth interior for easy maintenance
- Fully assembled module(s) with cartridge filters
- Energy-efficient, inside-access light fixture(s)
- Recirculates clean air
- Assembly hardware and drawings
- Air make-up not required
- Designed to comply with all federal, OSHA and NFPA regulations



OPTIONS

- White pre-coated panels
- Panels can be lined with fire retardant, acoustical, washable material for noise absorption
- Booth extensions
- Product doors
- Deluxe control panel



| Standard Model No. | Inside Dimensions | | | Outside Dimensions | | | Includes SAFE-AIR Module(s) | | | | No. Light Fixtures |
|--|-------------------|--------|--------|--------------------|--------|-------|-----------------------------|-----|--------------|--------|--------------------|
| | Width | Height | Depth* | Width | Height | Depth | Size | Qty | F.P.M. Clean | SCFM | |
| Wood & Metals (not recommended for combustible metals) | | | | | | | | | | | |
| DCBG-080806-SG | 8' | 8' | 6' | 8'-4" | 8'-2" | 10' | 4' | 2 | 140 | 10,240 | 1 |
| DCBG-080809-SG | 8' | 8' | 9' | 8'-4" | 8'-2" | 13' | 4' | 2 | 140 | 10,240 | 1 |
| DCBG-080812-SG | 8' | 8' | 12' | 8'-4" | 8'-2" | 16' | 4' | 2 | 140 | 10,240 | 2 |
| DCBG-120806-SG | 12' | 8' | 6' | 12'-4" | 8'-10" | 10' | 4' | 3 | 140 | 15,360 | 2 |
| DCBG-120809-SG | 12' | 8' | 9' | 12'-4" | 8'-10" | 13' | 4' | 3 | 140 | 15,360 | 2 |
| DCBG-120812-SG | 12' | 8' | 12' | 12'-4" | 8'-10" | 16' | 4' | 3 | 140 | 15,360 | 4 |
| DCBG-150806-SG | 15' | 8' | 6' | 15'-4" | 8'-10" | 10' | 7' | 2 | 140 | 17,920 | 4 |
| DCBG-150809-SG | 15' | 8' | 9' | 15'-4" | 8'-10" | 13' | 7' | 2 | 140 | 17,920 | 4 |
| DCBG-150812-SG | 15' | 8' | 12' | 15'-4" | 8'-10" | 16' | 7' | 2 | 140 | 17,920 | 8 |
| DCBG-220806-SG | 22' | 8' | 6' | 23'-4" | 8' | 10' | 7' | 3 | 140 | 26,880 | 5 |
| DCBG-220809-SG | 22' | 8' | 9' | 23'-4" | 8' | 13' | 7' | 3 | 140 | 26,880 | 5 |
| DCBG-220812-SG | 22' | 8' | 12' | 23'-4" | 8' | 16' | 7' | 3 | 140 | 26,880 | 10 |
| Fiberglass, Laminates & Composites | | | | | | | | | | | |
| DCBG-080806-CO | 8' | 8' | 6' | 8'-4" | 8'-2" | 10' | 4' | 2 | 140 | 10,240 | 1 |
| DCBG-080809-CO | 8' | 8' | 9' | 8'-4" | 8'-2" | 13' | 4' | 2 | 140 | 10,240 | 1 |
| DCBG-080812-CO | 8' | 8' | 12' | 8'-4" | 8'-2" | 16' | 4' | 2 | 140 | 10,240 | 2 |
| DCBG-120806-CO | 12' | 8' | 6' | 12'-4" | 8'-10" | 10' | 4' | 3 | 140 | 15,360 | 2 |
| DCBG-120808-CO | 12' | 8' | 9' | 12'-4" | 8'-10" | 13' | 4' | 3 | 140 | 15,360 | 2 |
| DCBG-120812-CO | 12' | 8' | 12' | 12'-4" | 8'-10" | 16' | 4' | 3 | 140 | 15,360 | 4 |
| DCBG-150806-CO | 15' | 8' | 6' | 15'-4" | 8'-10" | 10' | 7' | 2 | 140 | 17,920 | 4 |
| DCBG-150809-CO | 15' | 8' | 9' | 15'-4" | 8'-10" | 13' | 7' | 2 | 140 | 17,920 | 4 |
| DCBG-150812-CO | 15' | 8' | 12' | 15'-4" | 8'-10" | 16' | 7' | 2 | 140 | 17,920 | 8 |
| DCBG-220806-CO | 22' | 8' | 6' | 23'-4" | 8' | 10' | 7' | 3 | 140 | 26,880 | 5 |
| DCBG-220809-CO | 22' | 8' | 9' | 23'-4" | 8' | 13' | 7' | 3 | 140 | 26,880 | 5 |
| DCBG-220812-CO | 22' | 8' | 12' | 23'-4" | 8' | 16' | 7' | 3 | 140 | 26,880 | 10 |

*Working depth is nominal, actual working depth will vary depending on module type selected, Dust Collection Modules are on pg 6.

Blast Booths

An alternative to chemical stripping for removing paint is abrasive blasting. Blasting safely and efficiently removes paint by forcibly propelling abrasive material against a surface under high pressure. GFS' blast booths provide a safe, clean environment for blasting operations. Our blast booths are custom engineered, designed and built to meet your unique requirements.

BOOTH FEATURES

- 11-gauge galvanized steel panels, rigidly reinforced with structural steel.
- Panels are pre-punched and companion flanged for easy assembly
- ETL listed, 4-foot, 6-tube fluorescent light fixtures mounted behind a polycarbonate light lens. Rear-hinged access for easy lamp replacement.
- Blast shields for intake/exhaust vents to prevent media from exiting the enclosure
- Door limit switches to shut down air when booth doors open
- Designed to comply with all federal, OSHA and NFPA regulations



OPTIONS

- 14- or 18- gauge galvanized steel panels
- Rubber liner (1/4" thick) for side/end walls and product doors
- Media recovery systems
- Rubber roll-up doors
- Conveyor and crane openings



< Optional crane opening

Optional > rubber lining



Dust Collectors

DUST COLLECTION MODULES

GFS Dust Collection Modules operate by pulling air into the module and through a cartridge filtration system. Dust is filtered out, while clean air is exhausted back into the plant. Standard modules obtain up to 99.8% efficiency at 5 microns.

FEATURES

- Factory assembled
- High-efficiency cartridge filtration system
- Heavy-duty construction, 12-gauge painted mild steel
- Direct-drive blower & motor, 208, 230/460V, 60-Hz, 3 PH
- Compressed air requirements: clean filtered dry air, 6 cfm at 80 to 100 psi
- Complies with all federal, OSHA and NFPA regulations
- Choose door type:



Open Louver
for dust
and sanding



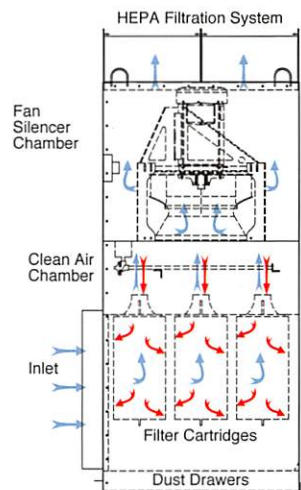
Spark Arrestor
for all grinding
applications

OPTIONS

- Deluxe control panel
- HEPA filtration

HEPA FILTRATION

Modules can be offered with an additional HEPA filtration system. These models obtain 99.9% efficiency at 0.3-microns, and include a magnahelic gauge to monitor HEPA filtration performance. Modules with HEPA filtration meet the requirements for safe hexavalent chromium arrestance.



| Standard Model No. | Performance Data | | | | Specifications | | | | | Appx. Ship Weight (lbs) | Optional Deluxe Control Panel |
|--|------------------|-------------|-----------------|-------|----------------|--------|--------|----------------------|------------------|-------------------------|-------------------------------|
| | Blower HP | No. Filters | Sq. Ft. Filters | SCFM | Width | Height | Depth* | Dust Stor. (cu. ft.) | Air-Filter Ratio | | |
| Wood & Metals (not recommended for combustible metals) | | | | | | | | | | | |
| DCM-4-SG | 5 | 9 | 1,719 | 5,120 | 4' | 8' 2" | 4' | 4.8 | 3.0:1 | 1,550 | SBCP-105 |
| DCM-7-SG | 7.5 | 15 | 2,865 | 8,960 | 7' | 8' 2" | 4' | 8.4 | 3.1:1 | 2,400 | SBCP-107 |
| Fiberglass, Laminates & Composites | | | | | | | | | | | |
| DCM-4-CO | 5 | 9 | 1,719 | 5,120 | 4' | 8' 2" | 4' | 4.8 | 3.0:1 | 1,550 | SBCP-105 |
| DCM-7-CO | 7.5 | 15 | 2,865 | 8,960 | 7' | 8' 2" | 4' | 8.4 | 3.1:1 | 2,400 | SBCP-107 |

| HEPA Filtration Model No. | Performance Data | | | | | | | | Specifications | | | | | Optional Deluxe Control Panel |
|--|------------------|------------------------|------------------------|---------------------|---------------------|-------|--------------|--------------|----------------|--------|--------|------------|----------------|-------------------------------|
| | Blower HP | No. of Primary Filters | Sq. Ft. Primary Filter | No. of HEPA Filters | Sq. Ft. HEPA Filter | SCFM | F.P.M. Clean | F.P.M. Dirty | Width | Height | Depth* | Dust Stor. | Air Flow Ratio | |
| Wood & Metals (not recommended for combustible metals) | | | | | | | | | | | | | | |
| DCM-4H-SG | 7.5 | 9 | 1,719 | 4 | 1,560 | 5,120 | 140 | 120 | 4' | 10' 2" | 4' | 4.8 | 3.0:1 | SBCP-110 |
| DCM-7H-SG | 10 | 15 | 2,865 | 6 | 2,340 | 8,960 | 140 | 120 | 7' | 10' 2" | 4' | 8.4 | 3.1:1 | SBCP-115 |
| Fiberglass, Laminates & Composites | | | | | | | | | | | | | | |
| DCM-4H-CO | 7.5 | 9 | 1,719 | 4 | 1,560 | 5,120 | 140 | 120 | 4' | 10' 2" | 4' | 4.8 | 3.0:1 | SBCP-110 |
| DCM-7H-CO | 10 | 15 | 2,865 | 6 | 2,340 | 8,960 | 140 | 120 | 7' | 10' 2" | 4' | 8.4 | 3.1:1 | SBCP-115 |

*Working depth determined by door type and size



Dust Collectors

HIGH PRODUCTION COLLECTORS FOR BLASTING APPLICATIONS

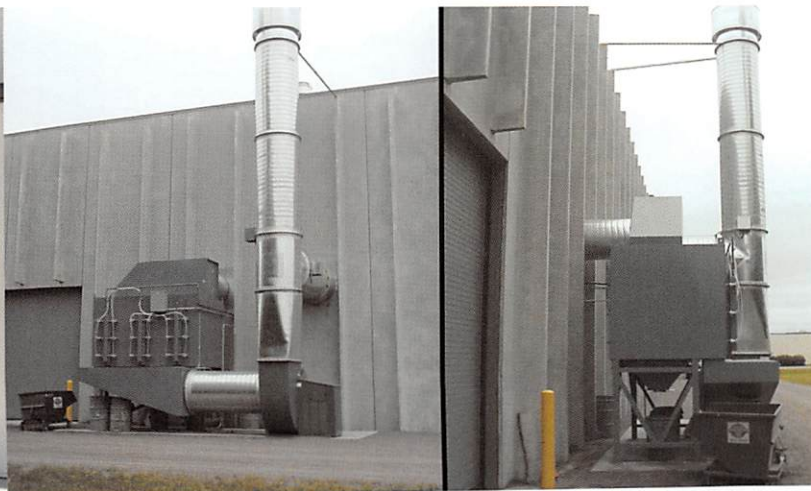
GFS High Production Dust Collectors have been used with a wide variety of applications, including blasting, welding, mixing and conveyor transfer stations. These dust collectors are particularly well suited for filtering very fine particles in large air volumes. Standard models range from a four-cartridge to 80-cartridge capacity, handling small to high volume air capacities.

FEATURES

- **Downdraft Airflow** - Dust-laden air is pulled from air inlet on the top of the unit, through horizontal filter cartridges and into the collection hopper below.
- **On-Demand Filter Cleaning** - A photohelic gauge on the dust collector monitors pressure change in the cartridge filters. When the filters' differential pressure reaches the upper set point, reverse pulsejet cleaning begins by pulsing compressed air through the filters. This cycle continues until the differential pressure has reached the lower set point. When the last cartridge filters are cleaned, the cycle shuts off.
- **Easy Maintenance** - Filter cartridges are easily accessed for service or replacement through portholes on the front of the collector module.

| Collector Model No. | Specifications | | | | | | |
|---------------------|----------------|--------|-------|-------------------------------|---------------------|-----------------------|--------|
| | Width | Height | Depth | Filter Cartridge Measure Area | Air to Filter Ratio | No. Cartridge Filters | SCFM |
| HVC-4-2-1 | 40" | 115" | 72" | 904 | 2.7:1 | 4 | 2,400 |
| HVC-8-2-2 | 40" | 125" | 72" | 1,808 | 2.7:1 | 8 | 4,800 |
| HVC-12-2-3 | 60" | 125" | 72" | 2,712 | 2.7:1 | 12 | 7,200 |
| HVC-16-2-4 | 80" | 125" | 72" | 3,616 | 2.7:1 | 16 | 9,600 |
| HVC-24-4-3 | 80" | 144" | 72" | 5,424 | 2.7:1 | 24 | 14,400 |
| HVC-32-4-4 | 80" | 163" | 72" | 7,232 | 2.7:1 | 32 | 19,200 |
| HVC-36-6-3 | 120" | 144" | 72" | 8,136 | 2.7:1 | 36 | 21,600 |
| HVC-48-6-4 | 120" | 163" | 72" | 10,848 | 2.7:1 | 48 | 28,800 |
| HVC-60-10-3 | 200" | 144" | 72" | 13,560 | 2.7:1 | 60 | 36,000 |
| HVC-72-12-3 | 240" | 144" | 72" | 16,272 | 2.7:1 | 72 | 43,200 |
| HVC-80-10-4 | 200" | 163" | 72" | 18,080 | 2.7:1 | 80 | 48,000 |

The first digit in the model number indicated the total number of filter cartridges in the unit. The second digit indicates the number of horizontal filter rows, and the third digit indicates the number of vertical filter rows.





GLOBAL
FINISHING
SOLUTIONS

FROM AMERICA'S HEARTLAND TO YOUR FRONT DOOR

Made in Wisconsin, USA



With more than 200,000 square feet of manufacturing space and state-of-the-art equipment, GFS has the capacity and talent to build our booths from scratch. Virtually every part of our products are built in our shop, including the sheet steel, control panels, lights and hinges.

All of GFS' products are fully designed and manufactured in our Osseo, Wisconsin facility. With a strong history in manufacturing, Wisconsin is home to a large and diversified economy. Among good company, some of America's largest manufacturers have placed their roots in this state, including Briggs & Stratton, Harley-Davidson, Johnson Controls, Mercury Marine, Oshkosh and Rockwell Automation.



GLOBALFINISHING.COM

800-848-8738 • info@globalfinishing.com