

**General Inquiries**  
 Tel: 1-800-828-1666  
 info@washingtomills.com  
 www.washingtomills.com

**Washington Mills North Grafton, Inc.**  
 PO Box 428  
 20 North Main Street  
 North Grafton, MA 01536  
 Tel: 508-839-6511  
 Fax: 508-839-7675  
 Email: info@washingtomills.com

**Washington Mills Electro Minerals Corp.**  
 PO Box 423  
 1801 Buffalo Avenue  
 Niagara Falls, NY 14302  
 Tel: 716-278-6600  
 Fax: 716-278-6650  
 Email: info@washingtomills.com

**Washington Mills Electro Minerals Corp.**  
 PO Box 1002  
 7780 Stanley Avenue  
 Niagara Falls, Ontario L2E 6V9 Canada  
 Email: info@washingtomills.com

**Washington Mills Tonawanda, Inc.**  
 1000 E. Niagara Street  
 Tonawanda, NY 14150  
 Email: info@washingtomills.com

**Washington Mills Electro Minerals Ltd.**  
 Mosley Road, Trafford Park  
 Manchester M17 1NR England  
 Email: info@washingtomills.com

**Washington Mills Hennepin, Inc.**  
 13230 Prairie Industrial Parkway  
 Hennepin, IL 61327  
 Email: info@washingtomills.com

**Washington Mills AS**  
 NO-7300  
 Orkanger, Norway  
 Email: wmas@washingtomills.no

## DESCRIPTION

BLASTITE® is a tough, medium density, virgin, fused brown aluminum oxide abrasive.

## APPLICATIONS

BLASTITE® is designed for the pressure blasting of materials of almost every type, including glass, granite, marble, and ceramic. It is also used for the preparation of surfaces prior to painting or bonding; as well as for light deburring, scale removal, and the generation of matte finishes. BLASTITE® is closely sized, enabling operators to consistently duplicate finishes. BLASTITE® is produced to conform to C.I.D.-A-A-59316, General Electric Aircraft Engine Group D50TF5, and most Pratt and Whitney Aircraft PMC Specifications.

## TYPICAL CHEMICAL ANALYSIS

Al <sub>2</sub> O <sub>3</sub> (by difference)	96.00%
TiO <sub>2</sub>	2.70%
SiO <sub>2</sub>	0.70%
Fe <sub>2</sub> O <sub>3</sub>	0.15%
CaO	0.15%
MgO	0.30%

## TYPICAL PHYSICAL PROPERTIES

Crystallography	Alpha alumina, in a hexagonal crystal
Color	Brown
Specific Gravity	3.92
Knoop <sub>100</sub> Hardness	2050
Shape	Blocky with sharp edges
Ball Mill Friability	50 (14 grit)
Grading (Grain)	ANSI B74.12-2001, Table 3
Bulk Density (Grain)	ANSI B74.4-1992 (R2007)

## GRAIN SIZES AVAILABLE

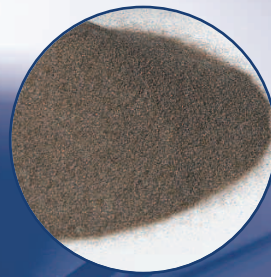
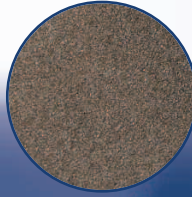
16, 20, 24, 30, 36, 46, 54, 60, 70, 80, 90, 100, 120, 150, 180, 220, and 240

## SIZE CURVES

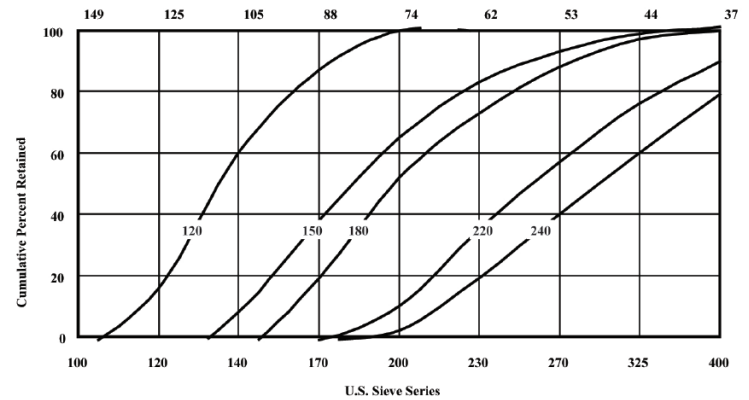
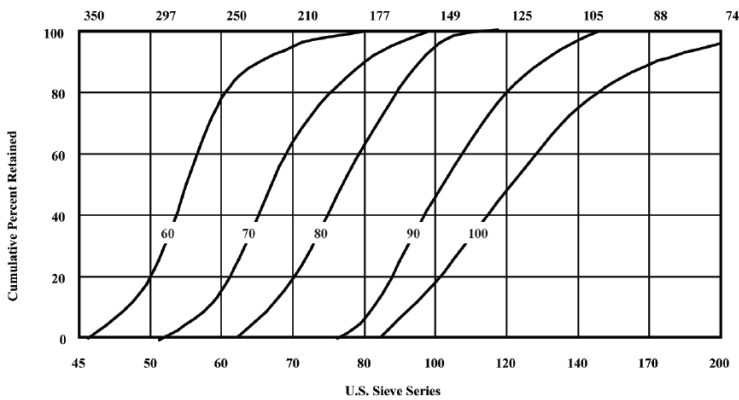
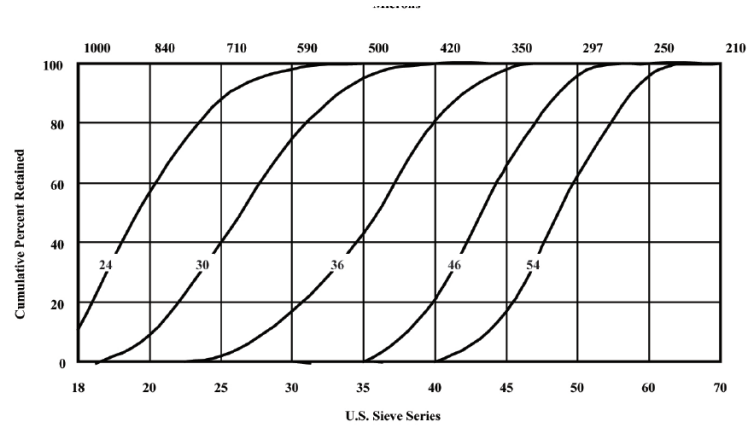
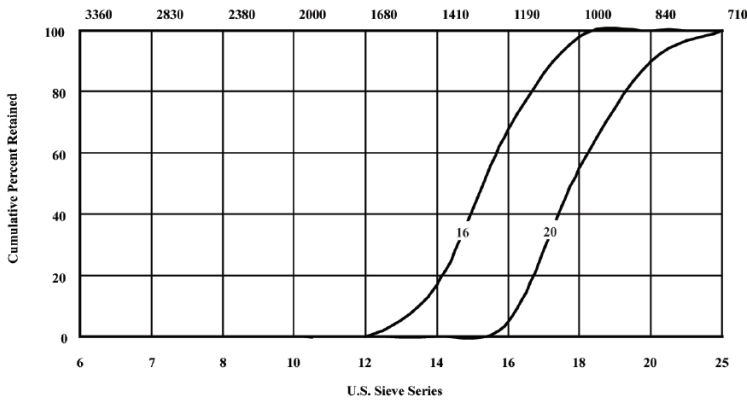
See Page 2

This product information is NOT a specification. It is offered in good faith only as a general description of the product. **Washington Mills makes no warranty of merchantability or of fitness for any particular purpose.** The product chemistry and other characteristics may vary or contain trace elements not specifically listed. If your intended application for this product is so critical that relatively minor variations in chemistry or physical properties could cause problems or damage to your process or product, please contact our office for further assistance.

# BLASTITE® (PG. 2)



## TYPICAL SIZE CURVES



This product information is NOT a specification. It is offered in good faith only as a general description of the product. **Washington Mills makes no warranty of merchantability or of fitness for any particular purpose.** The product chemistry and other characteristics may vary or contain trace elements not specifically listed. If your intended application for this product is so critical that relatively minor variations in chemistry or physical properties could cause problems or damage to your process or product, please contact our office for further assistance.