

# FROHN

## Stainless Steel Cut-Wire



### Application

Surface hardening (Shot Peening), etc.

### Material

1.4310 (AISI 302)

1.4016 (AISI 430)

1.4301 (AISI 304)

**Other materials available upon request**

### Manufacturing standards / Applicable Specifications

AMS 2431/4, SAE J441 etc.

### Sizes in mm (inch)

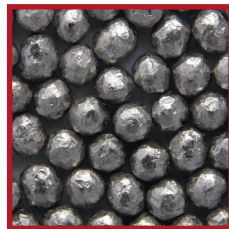
0,3 (.012)	0,6 (.023)	0,9 (.035)	1,2 (.047)	1,8 (.070)
0,4 (.017)	0,7 (.028)	1,0 (.041)	1,4 (.054)	2,0 (.078)
0,5 (.020)	0,8 (.032)	1,1 (.043)	1,6 (.062)	2,2 (.086)

**Other sizes available upon request**

### Grain shape



cylindrical (CW)



conditioned (CCW)

### Material Hardness

Dependant upon grain shape and size (450 HV1 to 670 HV1)

### Packaging

- 25 kg PE plastic bags on European pallet up to 1000 kg
- Big Bags from 500 to 1000 kg on non-returnable pallet
- 200 liter barrels from 800 to 1000 kg

**Other packaging available upon request**