

Donaldson®
Torit®

**DOWNFLO® WORKSTATION
DUST COLLECTORS**

ULTRA-WEB®

High Efficiency Fine Fiber Filters Built to Last



NOW AVAILABLE WITH



CONNECTED FILTRATION SERVICES

FLEXIBLE, MODULAR DUST COLLECTION

Downflo® WorkStations (DWST) fit anywhere on the plant floor and apply NO restrictions to worker movements or visibility. The full line of WorkStations is designed specifically for those in-plant areas where dirty and/or noisy operations are out in the open—grinding, sanding, chipping, batch mixing or welding.

The Downflo WorkStation’s advantages are found in the collector’s exclusive design and proprietary components. Featuring a ledgeless design in combination with proprietary Ultra-Web® filter media, the DWST delivers exceptional performance in metalworking, woodworking, and process applications where high filtration efficiency and ledgeless construction is often a requirement.

THE DOWNFLO WORKSTATION FEATURES

- Flexible, modular, self-contained workstations
- Proprietary Ultra-Web cartridge filters provide cleaner air longer
- Easy filter access requires no tools
- No hoods or ductwork required
- Energy savings – recirculate clean air and reduce the need for costly make-up air
- Ledgeless construction minimizes dust build up inside the collector
- Reversible louver inlets
- 10-year warranty



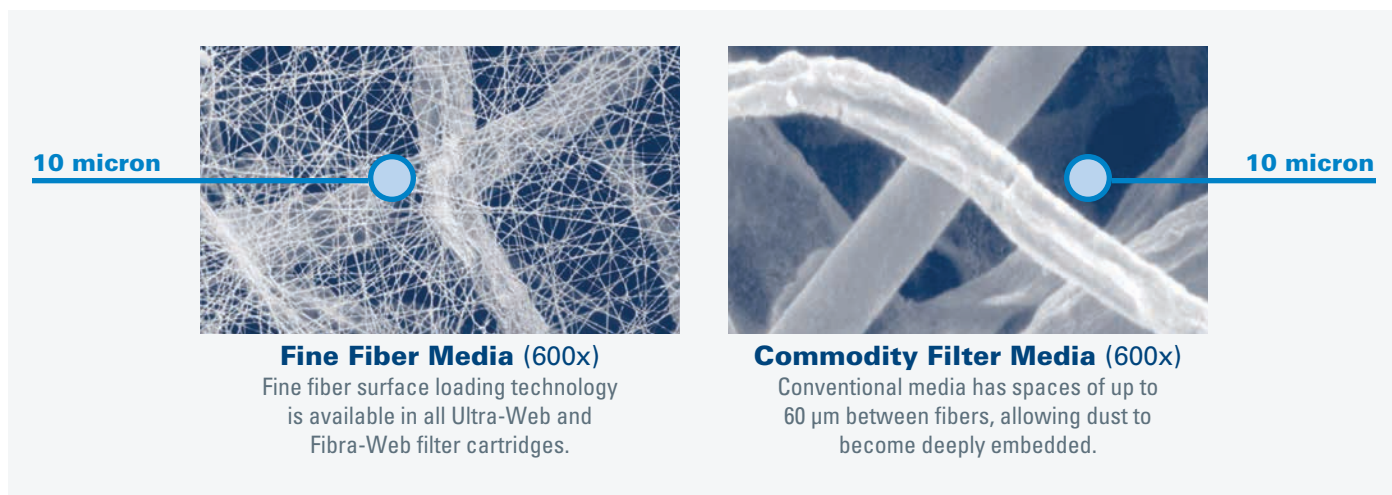
iCUE™ CONNECTED FILTRATION SERVICE

Now available with the option of Donaldson’s iCue connected filtration service, an IoT enabled service designed to prompt timely maintenance, helping improve production uptime and reduce operating costs.

CARTRIDGE FILTER TECHNOLOGY

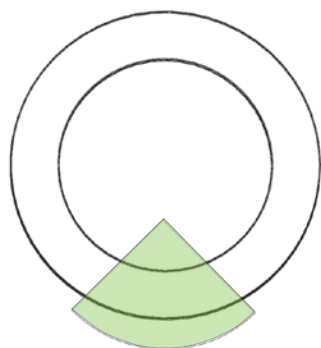
HIGH PERFORMANCE FILTERS

Filter design is another indication of Donaldson Torit's commitment to technical research and development. The distinguishing factor in our filters is Ultra-Web® filtration technology. Ultra-Web fine fiber media uses a layer of fibers 0.2 to 0.3 microns in diameter to capture contaminants on the surface of the media less than one micron in size. The resulting dust cake is easily cleaned off during the automated collector cleaning cycles providing cleaner air longer.

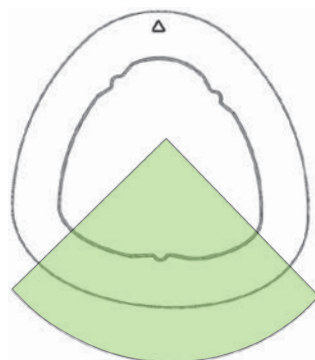


TRIANGONAL FILTER SHAPE

The ultimate goal of any pulse-cleaned dust collector is to remove the contaminant from the airstream and get the contaminant into a containment vessel. The unique filter shape positions more filter media at the bottom of the cartridge element so pulse-cleaning energy directs the ejected dust toward its ultimate destination – the containment vessel!



25%
ROUND FILTER



27%
TRIANGONAL FILTER

The triangular filter features more filter media at the bottom of the cartridge element than any other cartridge on the market.

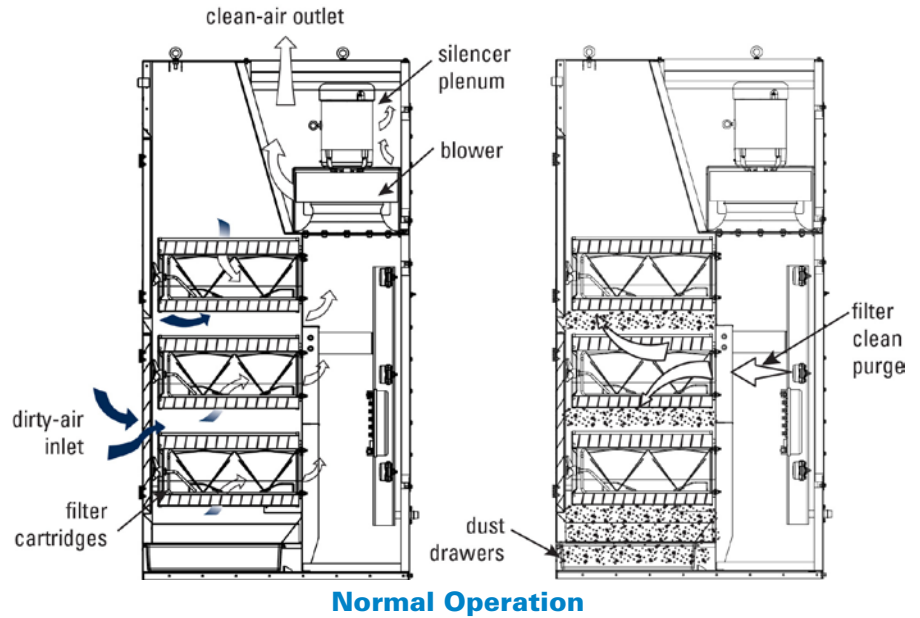
CARTRIDGE FILTERS FOR MANY APPLICATIONS

The Downflo WorkStation in conjunction with Donaldson Torit's unique triangular-shaped filter cartridges are an unbeatable system. Choose from our superior line of filters to complete the most powerful filtration solution available for your application.

SIZES & OPERATIONS

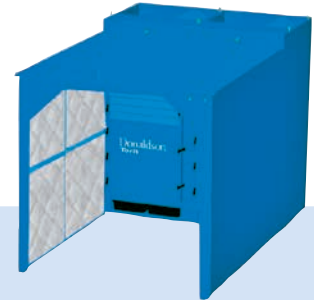
DWST MODELS 4-1 TO 6-4

- 8 standard model sizes
- Customized sizes available
- Many options and accessories



MANY DESIGN OPTIONS

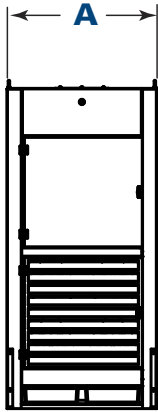
DWST booths are designed to remove fine airborne contaminants from the workers' breathing zone and provide a cleaner working environment in metalworking, woodworking, and process applications.



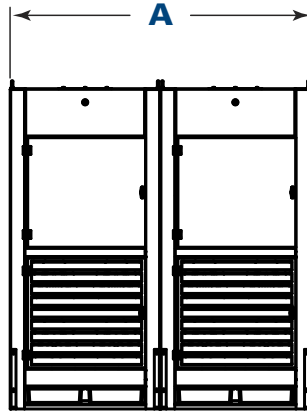
Models*	Canopy with Side Shields	Soft-Wall Acoustical Curtains	Hard-Wall Acoustical Panels
Purpose	Most basic booth/hooding arrangement	Lightweight structure for moderate sound control	Heavy-duty structure for higher sound control
DWST 4-1	45 x 36 x 90 (1143 x 914 x 2286 mm)	—	—
DWST 4-2	90 x 36 x 90 (2286 x 914 x 2286 mm)	90 x 90 x 90 (2286 x 2286 x 2286 mm)	90 x 90 x 90 (2286 x 2286 x 2286 mm)
DWST 4-3	—	135 x 90 x 90 (3429 x 2286 x 2286 mm)	135 x 90 x 90 (3429 x 2286 x 2286 mm)
DWST 4-4	—	180 x 90 x 90 (4572 x 2286 x 2286 mm)	180 x 90 x 90 (4572 x 2286 x 2286 mm)
DWST 4-5+	—	Custom	Custom
DWST 6-1	45 x 36 x 90 (1143 x 914 x 2286 mm)	67.5 x 90 x 90 (1715 x 2286 x 2286 mm)	—
DWST 6-2	90 x 36 x 90 (2286 x 914 x 2286 mm)	135 x 90 x 90 (3429 x 2286 x 2286 mm)	90 x 90 x 90 (2286 x 2286 x 2286 mm)
DWST 6-3	—	180 x 90 x 90 (4572 x 2286 x 2286 mm)	135 x 90 x 90 (3429 x 2286 x 2286 mm)
DWST 6-4	—	Custom	180 x 90 x 90 (4572 x 2286 x 2286 mm)
DWST 6-5+	—	Custom	Custom

*Dimensions are width x depth x height in inches (millimeters)

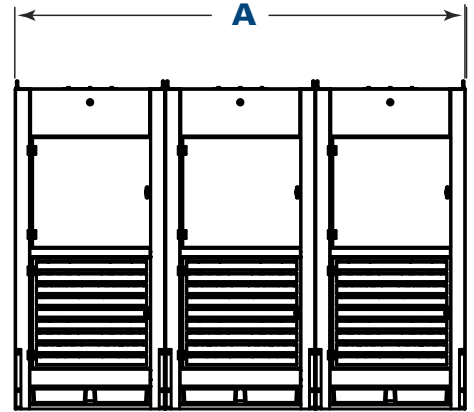
DIMENSIONS & SPECIFICATIONS



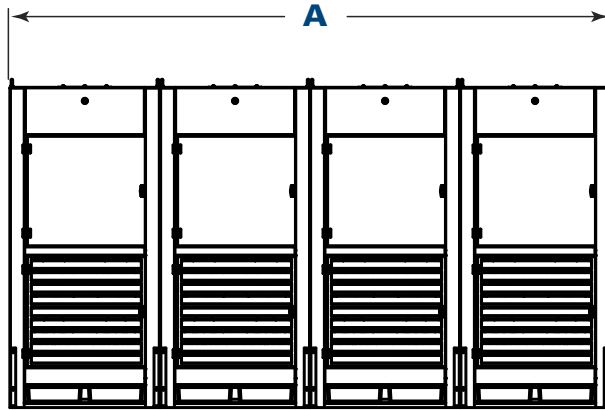
Front View
DWST 4-1, DWST 6-1 - Models



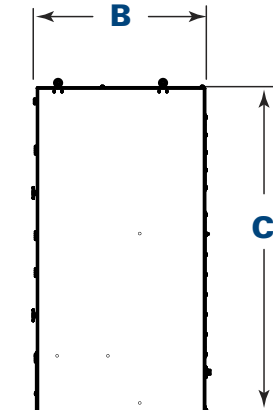
Front View
DWST 4-2, DWST 6-2 - Models



Front View
DWST 4-3, DWST 6-3 - Models



Front View
DWST 4-4, DWST 6-4 - Models



Side View
All Models

Base Model*	Modular Assemblies	Nominal Airflow**		No. of Filters	Ultra-Web Filter Area		No. of Modules	No. of Valves	No. of Dust Drawers	Shipping Weight	Dimensions						
		cfm	m³/h		ft²	m²					A		B		C		
											lb	kg	in	mm	in	mm	in
DWST 4-1		5,800	9,854	4	1,016	94	1	4	2	1300	589.7	45.0	1143.0	51.1	1298	96.0	2438.4
	DWST 4-2	11,600	19,709	8	2,032	189	2	8	4	2600	1179.3	90.0	2286.0	51.1	1298	96.0	2438.4
	DWST 4-3	17,400	29,563	12	3,048	283	3	12	6	3900	1769.0	135.0	3429.0	51.1	1298	96.0	2438.4
	DWST 4-4	23,200	39,417	16	4,064	378	4	16	8	5200	2358.7	180.0	4572.0	51.1	1298	96.0	2438.4
DWST 6-1		7,000	11,893	6	1,524	142	1	6	2	1350	612.3	45.0	1143.0	51.1	1298	96.0	2438.4
	DWST 6-2	14,000	23,786	12	3,048	283	2	12	4	2700	1224.7	90.0	2286.0	51.1	1298	96.0	2438.4
	DWST 6-3	21,000	35,679	18	4,572	425	3	18	6	4050	1837.0	135.0	3429.0	51.1	1298	96.0	2438.4
	DWST 6-4	28,000	47,572	24	6,092	566	4	24	8	5400	2449.4	180.0	4572.0	51.1	1298	96.0	2438.4

* The first number indicates number of filters in the power module, and the second number indicates number of power modules.

** Based on clean filters.

APPLICATIONS

- Paint
- Pigment
- Limestone
- Glass
- Composites
- Ceramics
- Fiberglass
- Granite
- Wood
- Steel
- Welding
- Grinding
- Abrasive Blasting
- Sanding
- Aerospace
- Fabricated Metals
- Plastics



STANDARD FEATURES & AVAILABLE OPTIONS

Collector Design	Std	Opt	Paint System	Std	Opt
Ledgeless Construction 14 Gauge	X		Primed inside and out, exterior surfaces finished blue	X	
Tubesheet, Base Plate 10 Gauge	X		Custom Color		X
Electrical Controls, Gauges & Enclosures					
High Performance Acoustical Airfoil Fans	X		Solid State Timer in NEMA 4 Enclosure	X	
Aluminum Fan Wheels	X		Delta P or Delta P Plus Control Panels		X
TEFC Motors – 7.5, 10 HP, 60 Hz	X		Magnehelic [®] Gauge		X
TEFC Motors – 5.5, 7.5 kW, 50 Hz		X	Photohelic [®] Gauge		X
Fan Compartment Fully Lined with Silencer Foam	X		iCue™ Connected Filtration Service		X
Compressed Air Required – 50 PSIG	X		Booth Options		
Fully Lined and Silenced Clean Air Plenum	X		Canopy with Side Shields - Painted steel construction side panels swing out 90°.		X
Reversible Open Louver Inlet		X	Soft-Wall Acoustical Curtains - Galvanized steel frames with clear PVC roof and gray acoustical side panels.		X
Quick and Easy Filter Access	X		Hard-Wall Acoustical Panels		X
Acoustical Panel		X	Sound Level**		
Two Plastic Dust Drawers per Power Mod	X		7.5 HP & 5.5 kW Power Packs – 65 dB(A)		
Galvanized Steel Dust Drawers		X	10 HP & 7.5 kW Power Packs – 70 dB(A)		
Integral Silencer	X		LAEq Pulse Average – 84-86 dB(A)		
Chamber Silencer		X	Warranty		
Caster Packs		X	10-Year Warranty	X	
Downdraft Bench Pack		X	* The Minimum Efficiency Reporting Value (MERV) of this filter cartridge has been determined through independent laboratory testing using ASHRAE 52.2 (2007) test standards. The MERV rating was determined at a face velocity of 118 feet (36.0 meters) per minute and loading up to four inches (101.6 millimeters) water gauge. Actual efficiency of any filter cartridge will vary according to the specific application parameters. Dust concentration, airflow, particle characteristics, and pulse cleaning methods all affect filtration efficiency.		
Bag-Out Bag (Filter & Dust Drawer)		X	** Magnehelic and Photohelic are registered trademarks of Dwyer Instruments, Inc.		
Sprinkler Pipe Coupling	X		*** Sound measurements were taken under free-field conditions and do not reflect the influences of actual operating environments. Standard sound pressure levels were taken at an operator position of 1.5m high and 1m from each of the four sides of the cabinet.		
Sprinkler Pack Assembly		X			
Cartridge Filters					
Ultra-Web® (MERV 15)	X				
Ultra-Tek® (MERV 12); Thermo-Web™ (MERV 14); Fibra-Web® (MERV 14); Ultra-Web SB (MERV 15); Torit-Tex™ (MERV 16), Ultra-Web® AS (MERV 15)		X			
HEPA/ASHRAE Afterfilters		X			



UNRIVALED PRODUCT SUPPORT

Our knowledgeable support staff is just a phone call away.

Need advice? Donaldson offers expert support for many filtration applications.

Need filters? We have 90,000 parts stocked and ready to ship within 24 hours.

Need support? Donaldson's comprehensive warranty and dedicated customer service staff are there when you need them.



Industry-Leading Technology

- Advanced filtration technology for optimal performance
- Reduced energy consumption and cost of ownership
- Advanced design and testing capabilities

The Most Filters and Parts

- For every brand and style of collector
- Wide range of filtration media for any application
- 90,000 filters and parts in stock and ready to ship

Unparalleled Support

- Live technical specialists
- Comprehensive pre- and post-sale support
- 40 manufacturing plants and 14 distribution centers worldwide

Significantly improve the performance of your collector with genuine Donaldson Torit replacement filters and parts. **Call Donaldson Torit at 800-365-1331.**

Important Notice

Many factors beyond the control of Donaldson can affect the use and performance of Donaldson products in a particular application, including the conditions under which the product is used. Since these factors are uniquely within the user's knowledge and control, it is essential the user evaluate the products to determine whether the product is fit for the particular purpose and suitable for the user's application. All products, product specifications, availability and data are subject to change without notice, and may vary by region or country.



Donaldson.

Donaldson Company, Inc.
Minneapolis, MN
donaldson.com • shop.donaldson.com

North America
Email: donaldson@donaldson.com
Phone: (USA): 800-365-1331 • (MX): 800-343-3639

Australasia
Email: marketing.australia@donaldson.com
Phone: +61 2 4350 2000
Toll Free: (AU) 1800 345 837 • (NZ) 0800 743 387

China IAF
Email: info.cn@donaldson.com
Phone: (86) 400-820-1038

Donaldson Europe B.V.B.A.
Email: IAF-europe@donaldson.com
Phone: + 32 (0) 16 38 38 11

India
Email: marketing.India@donaldson.com
Phone: +91 124 4807400
Toll Free: 18001035018

Latinoamerica
Email: IndustrialAir@donaldson.com
Phone: +52 449 300 2442

South Africa
Email: SAMarketing@donaldson.com
Phone: +27 11 997 6000

Southeast Asia IAF
Email: IAF.SEA@donaldson.com
Phone: (65) 63117373

F118009 ENG (10/19) Downflo Workstation Dust Collector Brochure ©2011-2019 Donaldson Company, Inc. Donaldson, Torit, Downflo, iCue, Ultra-Web, Fibra-Web, Ultra-Tek, Thermo-Web, Torit-Tex and the color blue are marks of Donaldson Company, Inc. All other marks belong to their respective owners.